

bs-8242R**[Primary Antibody]****CTDSPL2 Rabbit pAb****Bioss**
ANTIBODIES

www.bioss.com.cn

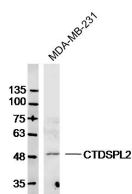
sales@bioss.com.cn

techsupport@bioss.com.cn

400-901-9800

— DATASHEET —

Host: Rabbit	Isotype: IgG	Applications: WB (1:500-2000)
Clonality: Polyclonal		Reactivity: Human (predicted: Mouse, Rat, Sheep, Dog, Horse)
GeneID: 51496	SWISS: Q05D32	
Target: CTDSPL2		Predicted MW.: 53 kDa
Immunogen: KLH conjugated synthetic peptide derived from human CTDSPL2: 11-110/466.		Subcellular Location: Nucleus
Purification: affinity purified by Protein A		
Concentration: 1mg/ml		
Storage: 0.01M TBS (pH7.4) with 1% BSA, 0.02% Proclin300 and 50% Glycerol. Shipped at 4°C. Store at -20°C for one year. Avoid repeated freeze/thaw cycles.		
Background: CTDSPL2 (CTD (carboxy-terminal domain, RNA polymerase II, polypeptide A) small phosphatase like 2), also known as HSPC058 or HSPC129, is a 466 amino acid protein that contains one FCP1 homology domain and belongs to the CTDSPL2 family. Existing as two alternatively spliced isoforms, CTDSPL2 is thought to function as a phosphatase and is encoded by a gene that maps to human chromosome 15q15.3. Encoding more than 700 genes, chromosome 15 is made up of approximately 106 million base pairs and comprises about 3% of the human genome. Angelman syndrome, Prader-Willi syndrome, Tay-Sachs disease and Marfan syndrome are all associated with defects in chromosome 15-localized genes.		

— VALIDATION IMAGES —

Sample: MDA-MB-231 Cell (Human) Lysate at 30 ug
Primary: Anti-CTDSPL2 (bs-8242R) at 1/300 dilution
Secondary: IRDye800CW Goat Anti-Rabbit IgG at 1/20000 dilution
Predicted band size: 53kD
Observed band size: 53kD