

bs-8241R**[Primary Antibody]****Bioss**
ANTIBODIES

www.bioss.com.cn

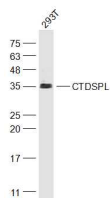
sales@bioss.com.cn

techsupport@bioss.com.cn

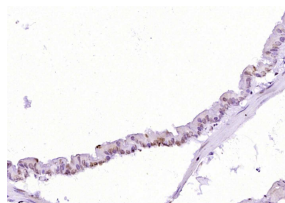
400-901-9800

CTDSPL Rabbit pAb**— DATASHEET —****Host:** Rabbit**Isotype:** IgG**Clonality:** Polyclonal**GeneID:** 10217**SWISS:** O15194**Target:** CTDSPL**Immunogen:** KLH conjugated synthetic peptide derived from human CTDSPL: 175-276/276.**Purification:** affinity purified by Protein A**Concentration:** 1mg/ml**Storage:** 0.01M TBS (pH7.4) with 1% BSA, 0.02% Proclin300 and 50% Glycerol.

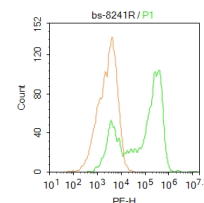
Shipped at 4°C. Store at -20°C for one year. Avoid repeated freeze/thaw cycles.

Background: Preferentially catalyzes the dephosphorylation of 'Ser-5' within the tandem 7 residues repeats in the C-terminal domain (CTD) of the largest RNA polymerase II subunit POLR2A. Negatively regulates RNA polymerase II transcription, possibly by controlling the transition from initiation/capping to processive transcript elongation (By similarity). Recruited by REST to neuronal genes that contain RE-1 elements, leading to neuronal gene silencing in non-neuronal cells.**Applications:** WB (1:500-2000)**IHC-P** (1:100-500)**IHC-F** (1:100-500)**IF** (1:100-500)**Flow-Cyt** (1ug/test)**Reactivity:** Human, Mouse
(predicted: Rat, Pig, Sheep, Cow, Chicken, Horse)**Predicted MW.:** 31 kDa**Subcellular Location:** Nucleus**— VALIDATION IMAGES —**

Sample: 293T(Human) Cell Lysate at 30 ug
 Primary: Anti-CTDSPL (bs-8241R) at 1/1000
 dilution Secondary: IRDye800CW Goat Anti-
 Rabbit IgG at 1/20000 dilution Predicted band
 size: 31 kD Observed band size: 31 kD



Paraformaldehyde-fixed, paraffin embedded
 (mouse lung tissue); Antigen retrieval by boiling
 in sodium citrate buffer (pH6.0) for 15min; Block
 endogenous peroxidase by 3% hydrogen
 peroxide for 20 minutes; Blocking buffer (normal
 goat serum) at 37°C for 30min; Antibody
 incubation with (CTDSPL) Polyclonal Antibody,
 Unconjugated (bs-8241R) at 1:400 overnight at
 4°C, followed by operating according to SP
 Kit(Rabbit) (sp-0023) instructions and DAB
 staining.



Blank control: HepG2. Primary Antibody (green
 line): Rabbit Anti-CTDSPL antibody (bs-8241)
 Dilution: 1µg /10⁶ cells; Isotype Control
 Antibody (orange line): Rabbit IgG . Secondary
 Antibody : Goat anti-rabbit IgG-PE Dilution: 1µg
 /test. Protocol The cells were fixed with 4% PFA
 (10min at room temperature) and then
 permeabilized with 90% ice-cold methanol for
 20 min at -20°C. The cells were then incubated in
 5%BSA to block non-specific protein-protein
 interactions for 30 min at room temperature
 .Cells stained with Primary Antibody for 30 min
 at room temperature. The secondary antibody
 used for 40 min at room temperature.
 Acquisition of 20,000 events was performed.