

CHRNA2 Rabbit pAb

Catalog Number: bs-4247R

Target Protein: CHRNA2

Concentration: 1mg/ml

Form: Liquid

Host: Rabbit

Clonality: Polyclonal

Isotype: IgG

Applications: WB (1:500-2000)

Reactivity: Mouse, Rat (predicted:Human, Pig, Cow, Chicken, Dog)

Predicted MW: 52 kDa

Entrez Gene: 1141

Swiss Prot: P17787

Source: KLH conjugated synthetic peptide derived from human CHRNA2: 131-230/502.

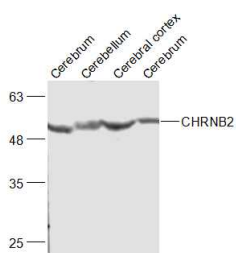
Purification: affinity purified by Protein A

Storage: 0.01M TBS (pH7.4) with 1% BSA, 0.02% Proclin300 and 50% Glycerol.

Shipped at 4°C. Store at -20°C for one year. Avoid repeated freeze/thaw cycles.

Background: Neuronal acetylcholine receptors are homo- or heteropentameric complexes composed of homologous alpha and beta subunits. They belong to a superfamily of ligand-gated ion channels which allow the flow of sodium and potassium across the plasma membrane in response to ligands such as acetylcholine and nicotine. This gene encodes one of several beta subunits. Mutations in this gene are associated with autosomal dominant nocturnal frontal lobe epilepsy. [provided by RefSeq, Jul 2008]

VALIDATION IMAGES



Sample: Cerebrum (Mouse) Lysate at 40 ug Cerebellum (Mouse) Lysate at 40 ug Cerebral cortex (Mouse) Lysate at 40 ug Cerebrum (Rat) Lysate at 40 ug
Primary: Anti-CHRNA2 (bs-4247R) at 1/500 dilution
Secondary: IRDye800CW Goat Anti-Rabbit IgG at 1/20000 dilution
Predicted band size: 52 kD Observed band size: 52 kD