

bs-6109R

[Primary Antibody]

SMARCB1 Rabbit pAb

BioSS
ANTIBODIES

www.bioss.com.cn

sales@bioss.com.cn

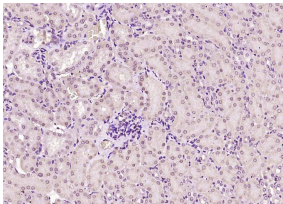
techsupport@bioss.com.cn

400-901-9800

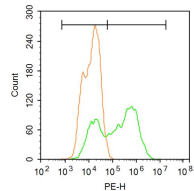
— DATASHEET —

Host: Rabbit	Isotype: IgG	Applications: IHC-P (1:100-500) IHC-F (1:100-500) IF (1:100-500) Flow-Cyt (3ug/test) Reactivity: Human, Mouse (predicted: Rat, Rabbit, Cow, Chicken, Horse) Predicted MW.: 44 kDa Subcellular Location: Nucleus
Clonality: Polyclonal		
GeneID: 6598	SWISS: Q12824	
Target: SMARCB1		
Immunogen: KLH conjugated synthetic peptide derived from human SNF5: 301-385/385.		
Purification: affinity purified by Protein A		
Concentration: 1mg/ml		
Storage: 0.01M TBS (pH7.4) with 1% BSA, 0.02% Proclin300 and 50% Glycerol. Shipped at 4°C. Store at -20°C for one year. Avoid repeated freeze/thaw cycles.		
Background: SNF5 is involved in transcriptional activation. The SWI/SNF complex is required for the induced expression of a large number of genes. This complex alters chromatin structure to facilitate binding of gene-specific dedicated transcription factors. SNF5 also funtions as a tumor suppressor gene and is frequently mutated in malignant rhabdoid tumors. It is also involved in adipocyte differentiation.		

— VALIDATION IMAGES —



Paraformaldehyde-fixed, paraffin embedded (mouse kidney); Antigen retrieval by boiling in sodium citrate buffer (pH6.0) for 15min; Block endogenous peroxidase by 3% hydrogen peroxide for 20 minutes; Blocking buffer (normal goat serum) at 37°C for 30min; Antibody incubation with (SNF5) Polyclonal Antibody, Unconjugated (bs-6109R) at 1:200 overnight at 4°C, followed by operating according to SP Kit(Rabbit) (sp-0023) instructions and DAB staining.



Blank control:A549. Primary Antibody (green line): Rabbit Anti-SNF5 antibody (bs-6109R) Dilution: 1µg /10⁶ cells; Isotype Control Antibody (orange line): Rabbit IgG . Secondary Antibody : Goat anti-rabbit IgG-PE Dilution: 3µg /test. Protocol The cells were fixed with 4% PFA (10min at room temperature) and then permeabilized with 90% ice-cold methanol for 20 min at -20°C. The cells were then incubated in 5% BSA to block non-specific protein-protein interactions for 30 min at room temperature .Cells stained with Primary Antibody for 30 min at room temperature. The secondary antibody used for 40 min at room temperature. Acquisition of 20,000 events was performed.