

bs-23861R**[Primary Antibody]****BioSS**
ANTIBODIES

www.bioss.com.cn

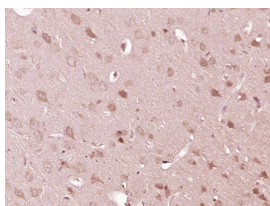
sales@bioss.com.cn

techsupport@bioss.com.cn

400-901-9800

RGC32 Rabbit pAb**DATASHEET**

Host: Rabbit	Isotype: IgG	Applications: IHC-P (1:100-500) IHC-F (1:100-500) IF (1:100-500)
Clonality: Polyclonal		
GeneID: 28984	SWISS: Q9H4X1	
Target: RGC32		
Immunogen: KLH conjugated synthetic peptide derived from human RGC32: 51-137/137.		
Purification: affinity purified by Protein A		Reactivity: Rat (predicted: Human, Mouse)
Concentration: 1mg/1ml		Predicted MW.: 15 kDa
Storage: 0.01M TBS (pH7.4) with 1% BSA, 0.02% Proclin300 and 50% Glycerol. Shipped at 4°C. Store at -20°C for one year. Avoid repeated freeze/thaw cycles.		Subcellular Location: Cytoplasm ,Nucleus
Background: RGC32, also known as C13orf15, is a 137 amino acid protein that localizes to the cytoplasm, as well as to the nucleus and the centrosome. Expressed at high levels in kidney, pancreas and skeletal muscle and at lower levels in brain, heart and placenta, RGC32 functions to modulate the activity of cell cycle-specific kinases, thereby regulating cell cycle progression. Additionally, RGC32 may promote cell cycle arrest at the G2/M phase transition and is thought to inhibit the growth of glioma cells, possibly functioning as a tumor suppressor. Conversely, overexpression of RGC32 may promote cell replication and assist in the pathogenesis of malignancies, suggesting that RGC32 also participates in tumor transformation and progression. RGC32 activity is induced by complement activation and by p53 in response to DNA damage. Multiple isoforms of RGC32 exist as a result of alternative splicing events.		

VALIDATION IMAGES

Paraformaldehyde-fixed, paraffin embedded (Rat brain); Antigen retrieval by boiling in sodium citrate buffer (pH6.0) for 15min; Block endogenous peroxidase by 3% hydrogen peroxide for 20 minutes; Blocking buffer (normal goat serum) at 37°C for 30min; Antibody incubation with (RGC32) Polyclonal Antibody, Unconjugated (bs-23861R) at 1:400 overnight at 4°C, followed by operating according to SP Kit(Rabbit) (sp-0023) instructions and DAB staining.

SELECTED CITATIONS

- **[IF=13.6]** Zhang Ka. et al. Integrated Single-Cell Transcriptomic Atlas of Human Kidney Endothelial Cells. J AM SOC NEPHROL. 2024 Feb;;10.1681/ASN.0000000000000320 IF ;Human. 38351505
- **[IF=4.5]** Alexandru Tatomir. et al. RGC-32 mediates proinflammatory and profibrotic pathways in immune-mediated

Important Note: This product as supplied is intended for research use only, not for use in human, therapeutic or diagnostic applications.

kidney disease. CLIN IMMUNOL. 2024 Aug;265:110279 IHC ;Mouse. 38878807