

**bs-23823R****[ Primary Antibody ]****CYP11B2 Rabbit pAb****Bioss**  
**ANTIBODIES**

www.bioss.com.cn

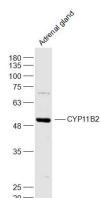
sales@bioss.com.cn

techsupport@bioss.com.cn

400-901-9800

**— DATASHEET —**

<b>Host:</b> Rabbit	<b>Isotype:</b> IgG	<b>Applications:</b> WB (1:500-2000)
<b>Clonality:</b> Polyclonal		<b>Reactivity:</b> Human, Mouse, Rat
<b>GeneID:</b> 13072	<b>SWISS:</b> P15539	
<b>Target:</b> CYP11B2		
<b>Immunogen:</b> KLH conjugated synthetic peptide derived from mouse CYP11B2: 221-320/500.		<b>Predicted MW.:</b> 52 kDa
<b>Purification:</b> affinity purified by Protein A		<b>Subcellular Location:</b> Cell membrane ,Cytoplasm
<b>Concentration:</b> 1mg/1ml		
<b>Storage:</b> 0.01M TBS (pH7.4) with 1% BSA, 0.02% Proclin300 and 50% Glycerol. Shipped at 4°C. Store at -20°C for one year. Avoid repeated freeze/thaw cycles.		
<b>Background:</b> This gene encodes a member of the cytochrome P450 superfamily of enzymes. The cytochrome P450 proteins are monooxygenases which catalyze many reactions involved in drug metabolism and synthesis of cholesterol, steroids and other lipids. This protein localizes to the mitochondrial inner membrane. The enzyme has steroid 18-hydroxylase activity to synthesize aldosterone and 18-oxocortisol as well as steroid 11 beta-hydroxylase activity. Mutations in this gene cause corticosterone methyl oxidase deficiency. [provided by RefSeq, Jul 2008].		

**— VALIDATION IMAGES —**

Sample: Adrenal gland(Rat) Lysate at 40 ug  
Primary: Anti-CYP11B2 (bs-23823R) at 1/1000  
dilution Secondary: IRDye800CW Goat Anti-  
Rabbit IgG at 1/20000 dilution Predicted band  
size: 52 kD Observed band size: 52 kD