

SPOCK2 Rabbit pAb

Catalog Number: bs-11966R

Target Protein: SPOCK2

Concentration: 1mg/ml

Form: Liquid

Host: Rabbit

Clonality: Polyclonal

Isotype: IgG

Applications: **WB** (1:500-2000), **ELISA** (1:5000-10000)

Reactivity: Mouse, Rat (predicted: Human, Chicken, Horse)

Predicted MW: 45 kDa

Subcellular: Secreted

Locations:

Entrez Gene: 9806

Swiss Prot: Q92563

Source: KLH conjugated synthetic peptide derived from human SPOCK2/Testican 2: 61-160/424.

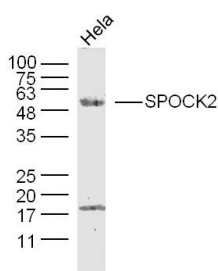
Purification: affinity purified by Protein A

Storage: 0.01M TBS (pH7.4) with 1% BSA, 0.02% Proclin300 and 50% Glycerol.

Shipped at 4°C. Store at -20°C for one year. Avoid repeated freeze/thaw cycles.

Background: This gene encodes a protein which binds with glycosaminoglycans to form part of the extracellular matrix. The protein contains thyroglobulin type-1, follistatin-like, and calcium-binding domains, and has glycosaminoglycan attachment sites in the acidic C-terminal region. Three alternatively spliced transcript variants that encode different protein isoforms have been described for this gene. [provided by RefSeq, Oct 2011]

VALIDATION IMAGES



Sample: HeLa Cell (Human) Lysate at 40 ug Primary: Anti-SPOCK2 (bs-11966R) at 1/300 dilution Secondary: IRDye800CW Goat Anti-Rabbit IgG at 1/20000 dilution Predicted band size: 45 kD Observed band size: 50 kD

PRODUCT SPECIFIC PUBLICATIONS

[IF=17.694] Xu An. et al. Rewired m6A epitranscriptomic networks link mutant p53 to neoplastic transformation. NAT COMMUN. 2023 Mar;14(1):1-19 IF ; Mouse . 36973285