

SPOCK1 Rabbit pAb

Catalog Number: bs-11965R

Target Protein: SPOCK1

Concentration: 1mg/ml

Form: Liquid

Host: Rabbit

Clonality: Polyclonal

Isotype: IgG

Applications: WB (1:500-2000)

Reactivity: Human (predicted:Mouse, Rat, Rabbit, Pig, Sheep, Dog)

Predicted MW: 49 kDa

Entrez Gene: 6695

Swiss Prot: Q08629

Source: KLH conjugated synthetic peptide derived from human SPOCK1/Testican 1: 51-150/439.

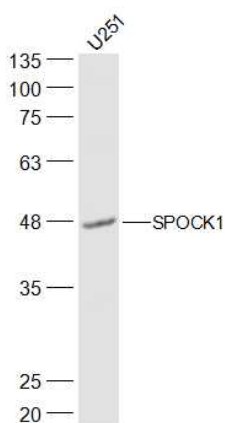
Purification: affinity purified by Protein A

Storage: 0.01M TBS (pH7.4) with 1% BSA, 0.02% Proclin300 and 50% Glycerol.

Shipped at 4°C. Store at -20°C for one year. Avoid repeated freeze/thaw cycles.

Background: This gene encodes the protein core of a seminal plasma proteoglycan containing chondroitin- and heparan-sulfate chains. The protein's function is unknown, although similarity to thyropan-type cysteine protease-inhibitors suggests its function may be related to protease inhibition. [provided by RefSeq, Jul 2008]

VALIDATION IMAGES



Sample: U251(Human) Cell Lysate at 30 ug Primary: Anti-SPOCK1 (bs-11965R) at 1/500 dilution Secondary: IRDye800CW Goat Anti-Rabbit IgG at 1/20000 dilution Predicted band size: 49 kD Observed band size: 48 kD