

GPR108 Rabbit pAb

Catalog Number: bs-16285R

Target Protein: GPR108

Concentration: 1mg/ml

Form: Liquid

Host: Rabbit

Clonality: Polyclonal

Isotype: IgG

Applications: WB (1:500-2000)

Reactivity: Mouse (predicted:Human, Rat, Pig, Sheep)

Predicted MW: 57 kDa

Subcellular Cell membrane

Locations:

Entrez Gene: 56927

Swiss Prot: Q9NPR9

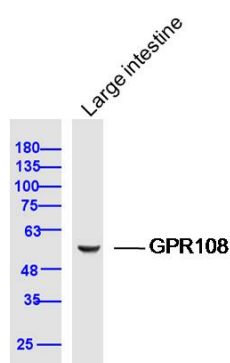
Source: KLH conjugated synthetic peptide derived from human GPR108: 101-200/543.

Purification: affinity purified by Protein A

Storage: 0.01M TBS (pH7.4) with 1% BSA, 0.02% Proclin300 and 50% Glycerol.

Shipped at 4°C. Store at -20°C for one year. Avoid repeated freeze/thaw cycles.

VALIDATION IMAGES



Sample: Large intestine (Mouse) Lysate at 40 ug
Primary: Anti-GPR108 (bs-16285R) at 1/300 dilution
Secondary: IRDye800CW Goat Anti-Rabbit IgG at 1/20000 dilution
Predicted band size: 57 kD
Observed band size: 57 kD