

bs-16284R**[Primary Antibody]****GPR107 Rabbit pAb****BioSS**
ANTIBODIES

www.bioss.com.cn

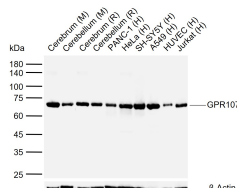
sales@bioss.com.cn

techsupport@bioss.com.cn

400-901-9800

— DATASHEET —

Host: Rabbit Clonality: Polyclonal GeneID: 57720 Target: GPR107 Immunogen: KLH conjugated synthetic peptide derived from human GPR107: 121-220/600. Purification: affinity purified by Protein A Concentration: 1mg/ml Storage: 0.01M TBS (pH7.4) with 1% BSA, 0.02% Proclin300 and 50% Glycerol. Shipped at 4°C. Store at -20°C for one year. Avoid repeated freeze/thaw cycles. Background: GPR107 (G protein-coupled receptor 107), also known as LUSTR1 (lung seven transmembrane receptor 1) or KIAA1624, is a 600 amino acid multi-pass membrane protein that belongs to the LU7TM family. Localizing to membrane, GPR107 exists as three alternatively spliced isoforms.	Isotype: IgG SWISS: Q5VW38	Applications: WB (1:500-2000) IHC-P (1:50-200) IHC-F (1:50-200) IF (1:50-200) ICC/IF (1:50-200) ELISA (1:5000-10000) Reactivity: Human, Mouse, Rat (predicted: Rabbit, Chicken, Dog, Horse) Predicted MW.: 63 kDa Subcellular Location: Cell membrane ,Cytoplasm
---	---	---

— VALIDATION IMAGES —

Sample: Lane 1: Mouse Cerebrum tissue lysates
Lane 2: Mouse Cerebellum tissue lysates Lane 3:
Rat Cerebrum tissue lysates Lane 4: Rat
Cerebellum tissue lysates Lane 5: Human
PANC-1 cell lysates Lane 6: Human HeLa cell
lysates Lane 7: Human SH-SY5Y cell lysates Lane
8: Human A549 cell lysates Lane 9: Human
HUVEC cell lysates Lane 10: Human Jurkat cell
lysates Primary: Anti-GPR107 (bs-16284R) at
1/1000 dilution Secondary: IRDye800CW Goat
Anti-Rabbit IgG at 1/20000 dilution Predicted
band size: 63 kDa Observed band size: 65 kDa

— SELECTED CITATIONS —

- **[IF=4.698]** Mariami Jasaszili. et al. The effects of neuronostatin on proliferation and differentiation of rat primary preadipocytes and 3T3-L1 cells. Bba-Mol Cell Biol L. 2021 Nov;1866:159018 WB ;Rat. 34332074