
GPR153 Rabbit pAb

Catalog Number: bs-16281R

Target Protein: GPR153

Concentration: 1mg/ml

Form: Liquid

Host: Rabbit

Clonality: Polyclonal

Isotype: IgG

Applications: WB (1:500-2000)

Reactivity: Human (predicted: Mouse, Rat, Rabbit, Pig, Sheep, Cow, Dog, Monkey)

Predicted MW: 65 kDa

Subcellular: Cell membrane

Locations:

Entrez Gene: 387509

Swiss Prot: Q6NV75

Source: KLH conjugated synthetic peptide derived from human GPR153: 101-200/609.

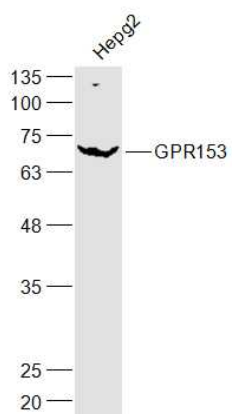
Purification: affinity purified by Protein A

Storage: 0.01M TBS (pH7.4) with 1% BSA, 0.02% Proclin300 and 50% Glycerol.

Shipped at 4°C. Store at -20°C for one year. Avoid repeated freeze/thaw cycles.

Background: GPR153 (G protein-coupled receptor 153), also known as PGR1, is a 609 amino acid multi-pass membrane protein that functions as an orphan receptor and belongs to the GPR1 family. The gene encoding GPR153 maps to human chromosome 1, which spans 260 million base pairs, contains over 3,000 genes and comprises nearly 8% of the human genome. Chromosome 1 houses a large number of disease-associated genes, including those that are involved in familial adenomatous polyposis, Stickler syndrome, Parkinson's disease, Gaucher disease, schizophrenia and Usher syndrome.

VALIDATION IMAGES



Sample: Hepg2(Human) Cell Lysate at 30 ug Primary: Anti-PKC iota (bs-16281R) at 1/300 dilution Secondary: IRDye800CW Goat Anti-Rabbit IgG at 1/20000 dilution Predicted band size: 65 kD Observed band size: 65 kD