

bs-16280R**[Primary Antibody]****GPR152 Rabbit pAb****BioSS**
ANTIBODIES

www.bioss.com.cn

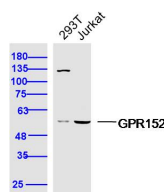
sales@bioss.com.cn

techsupport@bioss.com.cn

400-901-9800

— DATASHEET —

Host: Rabbit	Isotype: IgG	Applications: WB (1:500-2000)
Clonality: Polyclonal		Reactivity: Human (predicted: Dog, Monkey)
GeneID: 390212	SWISS: Q8TDT2	
Target: GPR152		Predicted MW.: 51 kDa
Immunogen: KLH conjugated synthetic peptide derived from human GPR152: 131-230/470.		Subcellular Location: Cell membrane
Purification: affinity purified by Protein A		
Concentration: 1mg/ml		
Storage: 0.01M TBS (pH7.4) with 1% BSA, 0.02% Proclin300 and 50% Glycerol. Shipped at 4°C. Store at -20°C for one year. Avoid repeated freeze/thaw cycles.		
Background: GPR152 is one of nine new members of the Rhodopsin family of human G protein-coupled receptors (GPCRs), and is an Orphan-U GPCR with an unknown ligand. Members of the GPCR superfamily participate in a variety of physiological functions and are major targets of pharmaceutical drugs.		

— VALIDATION IMAGES —

Sample: 293T Cell (Human) Lysate at 40 ug
Jurkat Cell (Human) Lysate at 40 ug Primary:
Anti-GPR152 (bs-16280R) at 1/300 dilution
Secondary: IRDye800CW Goat Anti-Rabbit IgG at
1/20000 dilution Predicted band size: 51 kD
Observed band size: 51 kD