

GPHB5 Rabbit pAb

Catalog Number: bs-16275R

Target Protein: GPHB5

Concentration: 1mg/ml

Form: Liquid

Host: Rabbit

Clonality: Polyclonal

Isotype: IgG

Applications: IHC-P (1:100-500), IHC-F (1:100-500), IF (1:100-500)

Reactivity: Rat (predicted:Human, Mouse, Pig, Sheep, Cow, Dog, Horse, Gorilla, Xenopus tropicalis, Elephant)

Predicted MW: 12 kDa

Subcellular Cytoplasm

Locations:

Entrez Gene: 122876

Swiss Prot: Q86YW7

Source: KLH conjugated synthetic peptide derived from human GPHB5: 25-100/130.

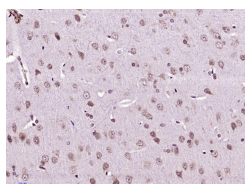
Purification: affinity purified by Protein A

Storage: 0.01M TBS (pH7.4) with 1% BSA, 0.02% Proclin300 and 50% Glycerol.

Shipped at 4°C. Store at -20°C for one year. Avoid repeated freeze/thaw cycles.

Background: GPHB5 is a cystine knot-forming polypeptide and a subunit of the dimeric glycoprotein hormone family (Hsu et al., 2002 [PubMed 12089349]).[supplied by OMIM, Mar 2008]

VALIDATION IMAGES



Paraformaldehyde-fixed, paraffin embedded (Rat brain); Antigen retrieval by boiling in sodium citrate buffer (pH6.0) for 15min; Block endogenous peroxidase by 3% hydrogen peroxide for 20 minutes; Blocking buffer (normal goat serum) at 37°C for 30min; Antibody incubation with (GPHB5) Polyclonal Antibody, Unconjugated (bs-16275R) at 1:400 overnight at 4°C, followed by operating according to SP Kit(Rabbit) (sp-0023) instructions and DAB staining.