

GPCR PGR10/GPCR GPR149 Rabbit pAb

Catalog Number: bs-16271R

Target Protein: GPCR PGR10/GPCR GPR149

Concentration: 1mg/ml

Form: Liquid

Host: Rabbit

Clonality: Polyclonal

Isotype: IgG

Applications: WB (1:500-2000)

Reactivity: Human

Predicted MW: 91 kDa

Subcellular Cell membrane

Locations:

Entrez Gene: 344758

Swiss Prot: Q86SP6

Source: KLH conjugated synthetic peptide derived from human GPCR PGR10/GPCR GPR149:
1-100/731.

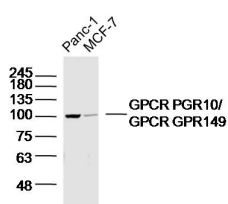
Purification: affinity purified by Protein A

Storage: 0.01M TBS (pH7.4) with 1% BSA, 0.02% Proclin300 and 50% Glycerol.

Shipped at 4°C. Store at -20°C for one year. Avoid repeated freeze/thaw cycles.

Background: GPR149 (G protein-coupled receptor 149), also known as PGR10 or IEDA, is a 731 amino acid multi-pass membrane protein that functions as an orphan receptor and belongs to the G protein-coupled receptor family. The gene encoding GPR149 maps to human chromosome 3, which houses over 1,100 genes, including a chemokine receptor (CKR) gene cluster and a variety of human cancer-related gene loci.

VALIDATION IMAGES



Sample: Panc-1 (Human)Lysate at 40 ug MCF-7(Human)Lysate at 40 ug Primary: Anti-GPCR PGR10/GPCR GPR149(bs-16271R)at 1/300 dilution Secondary: IRDye800CW Goat Anti-RabbitIgG at 1/20000 dilution
Predicted band size: 91kD Observed band size: 100kD