

GPCR GPR87 Rabbit pAb

Catalog Number: bs-16267R

Target Protein: GPCR GPR87

Concentration: 1mg/ml

Form: Liquid

Host: Rabbit

Clonality: Polyclonal

Isotype: IgG

Applications: WB (1:500-2000)

Reactivity: Human

Predicted MW: 41 kDa

Subcellular: Cell membrane

Locations:

Entrez Gene: 53836

Swiss Prot: Q9BY21

Source: KLH conjugated synthetic peptide derived from human GPCR GPR87: 151-250/358.

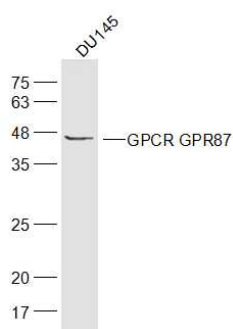
Purification: affinity purified by Protein A

Storage: 0.01M TBS (pH7.4) with 1% BSA, 0.02% Proclin300 and 50% Glycerol.

Shipped at 4°C. Store at -20°C for one year. Avoid repeated freeze/thaw cycles.

Background: This gene encodes a G protein-coupled receptor and is located in a cluster of G protein-couple receptor genes on chromosome 3. The encoded protein has been shown to be overexpressed in lung squamous cell carcinoma (PMID:18057535) and regulated by p53 (PMID:19602589). [provided by RefSeq, Nov 2011]

VALIDATION IMAGES



Sample: DU145(Human) Cell Lysate at 30 ug Primary: Anti-GPCR GPR87 (bs-16267R) at 1/300 dilution
Secondary: IRDye800CW Goat Anti-Rabbit IgG at 1/20000 dilution Predicted band size: 41 kD Observed band size: 46 kD