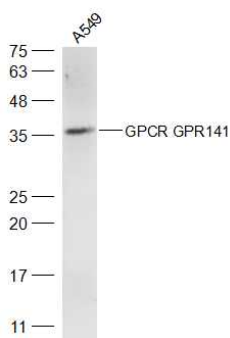


GPCR GPR141 Rabbit pAb

Catalog Number: bs-16261R
Target Protein: GPCR GPR141
Concentration: 1mg/ml
Form: Liquid
Host: Rabbit
Clonality: Polyclonal
Isotype: IgG
Applications: WB (1:500-2000)
Reactivity: Human
Predicted MW: 35 kDa
Subcellular: Cell membrane
Locations:
Entrez Gene: 353345
Swiss Prot: Q7Z602
Source: KLH conjugated synthetic peptide derived from human GPCR GPR141: 121-220/305.
Purification: affinity purified by Protein A
Storage: 0.01M TBS (pH7.4) with 1% BSA, 0.02% Proclin300 and 50% Glycerol.
Shipped at 4°C. Store at -20°C for one year. Avoid repeated freeze/thaw cycles.
Background: GPR141 is a member of the rhodopsin family of G protein-coupled receptors (GPRs) (Fredriksson et al., 2003 [PubMed 14623098]).[supplied by OMIM, Mar 2008]

VALIDATION IMAGES



Sample: A549(Human) Cell Lysate at 40 ug
Primary: Anti-GPCR GPR141 (bs-16261R) at 1/300 dilution
Secondary: IRDye800CW Goat Anti-Rabbit IgG at 1/20000 dilution
Predicted band size: 35 kD
Observed band size: 35 kD