

**bs-16257R**

**[ Primary Antibody ]**

## GOLGA8B Rabbit pAb

**BioSS**  
ANTIBODIES

www.bioss.com.cn

sales@bioss.com.cn

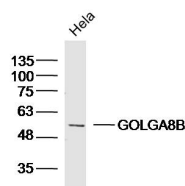
techsupport@bioss.com.cn

400-901-9800

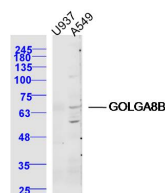
### — DATASHEET —

<b>Host:</b> Rabbit	<b>Isotype:</b> IgG	<b>Applications:</b> WB (1:500-2000)
<b>Clonality:</b> Polyclonal		<b>Reactivity:</b> Human
<b>GeneID:</b> 440270	<b>SWISS:</b> A8MQT2	
<b>Target:</b> GOLGA8B		
<b>Immunogen:</b> KLH conjugated synthetic peptide derived from human GOLGA8B: 511-603/603.		<b>Predicted MW.:</b> 67 kDa
<b>Purification:</b> affinity purified by Protein A		<b>Subcellular Location:</b> Cytoplasm
<b>Concentration:</b> 1mg/ml		
<b>Storage:</b> 0.01M TBS (pH7.4) with 1% BSA, 0.02% Proclin300 and 50% Glycerol. Shipped at 4°C. Store at -20°C for one year. Avoid repeated freeze/thaw cycles.		
<b>Background:</b> Function: May be involved in maintaining Golgi structure.		

### — VALIDATION IMAGES —



Sample: HeLa (Human) Lysate at 40 ug Primary: Anti-GOLGA8B(bs-16257R) at 1/300 dilution  
Secondary: IRDye800CW Goat Anti-Rabbit IgG at 1/20000 dilution Predicted band size: 67kD  
Observed band size: 51kD



Sample: U937 Cell (Human) Lysate at 40 ug Primary: Anti-GOLGA8B (bs-16257R) at 1/300 dilution  
Secondary: IRDye800CW Goat Anti-Rabbit IgG at 1/20000 dilution Predicted band size: 67 kD  
Observed band size: 67 kD