

bs-2535R**[Primary Antibody]****TFPI Rabbit pAb****Bioss**
ANTIBODIES

www.bioss.com.cn

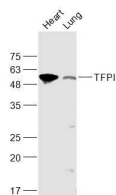
sales@bioss.com.cn

techsupport@bioss.com.cn

400-901-9800

— DATASHEET —

Host: Rabbit	Isotype: IgG	Applications: WB (1:500-2000)
Clonality: Polyclonal		Reactivity: Mouse, Rat (predicted: Human, Rabbit, Pig, Cow, Horse)
GeneID: 7035	SWISS: P10646	Predicted MW.: 32 kDa
Target: TFPI		Subcellular Location: Secreted
Immunogen: KLH conjugated synthetic peptide derived from human TFPI: 101-200/304.		
Purification: affinity purified by Protein A		
Concentration: 1mg/ml		
Storage: 0.01M TBS (pH7.4) with 1% BSA, 0.02% Proclin300 and 50% Glycerol. Shipped at 4°C. Store at -20°C for one year. Avoid repeated freeze/thaw cycles.		
Background: TFPI is a protease inhibitor that regulates the tissue factor (TF)- dependent pathway of blood coagulation. The coagulation process initiates with the formation of a factor VIIa-TF complex, which proteolytically activates additional proteases (factors IX and X) and ultimately leads to the formation of a fibrin clot. TFPI inhibits the activated factor X and VIIa-TF proteases in an autoregulatory loop. TFPI is glycosylated and predominantly found in the vascular endothelium and plasma in both free forms and complexed with plasma lipoproteins.		

— VALIDATION IMAGES —

Sample: Heart (Mouse) Lysate at 40 ug Lung
(Rat) Lysate at 40 ug Primary: Anti-TFPI
(bs-2535R) at 1/1000 dilution Secondary:
IRDye800CW Goat Anti-Rabbit IgG at 1/20000
dilution Predicted band size: 32 kD Observed
band size: 52 kD