

bs-18630R**[Primary Antibody]****MAGIX Rabbit pAb****BioSS**
ANTIBODIES

www.bioss.com.cn

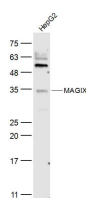
sales@bioss.com.cn

techsupport@bioss.com.cn

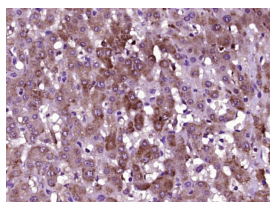
400-901-9800

— DATASHEET —

Host: Rabbit	Isotype: IgG	Applications: WB (1:500-2000)
Clonality: Polyclonal		IHC-P (1:100-500)
GeneID: 79917	SWISS: Q9H6Y5	IHC-F (1:100-500)
Target: MAGIX		IF (1:100-500)
Immunogen: KLH conjugated synthetic peptide derived from human MAGIX: 201-300/334.		
Purification: affinity purified by Protein A		Reactivity: Human
Concentration: 1mg/ml		
Storage: 0.01M TBS (pH7.4) with 1% BSA, 0.02% Proclin300 and 50% Glycerol. Shipped at 4°C. Store at -20°C for one year. Avoid repeated freeze/thaw cycles.		Predicted MW.: 35 kDa
Background: MAGIX is a 334 amino acid protein that contains one PDZ (DHR) domain and exists as three alternatively spliced isoforms. The gene encoding MAGIX maps to human chromosome Xp11.23. Chromosome X consists of about 153 million base pairs and nearly 1,000 genes. The combination of a X and Y chromosome lead to normal male development while two copies of X lead to normal female development. There are a number of conditions related to an unusual number and combination of sex chromosomes being inherited, including Turner's syndrome, Klinefelter's syndrome and Triple X syndrome. Color blindness, hemophilia, and Duchenne muscular dystrophy are well known X chromosome-linked conditions which affect males more frequently as males carry a single X chromosome.		Subcellular Location: Cytoplasm

— VALIDATION IMAGES —

Sample: HepG2(Human) Cell Lysate at 30 ug
 Primary: Anti-MAGIX (bs-18630R) at 1/300
 dilution Secondary: IRDye800CW Goat Anti-Rabbit IgG at 1/20000 dilution Predicted band size: 35 kD Observed band size: 35 kD



Paraformaldehyde-fixed, paraffin embedded (human liver tissue); Antigen retrieval by boiling in sodium citrate buffer (pH6.0) for 15min; Block endogenous peroxidase by 3% hydrogen peroxide for 20 minutes; Blocking buffer (normal goat serum) at 37°C for 30min; Antibody incubation with (MAGIX) Polyclonal Antibody, Unconjugated (bs-18630R) at 1:400 overnight at 4°C, followed by operating according to SP Kit(Rabbit) (sp-0023) instructions and DAB staining.