

bs-22139R**[Primary Antibody]****NR2F2 Rabbit pAb****Bioss**
ANTIBODIES

www.bioss.com.cn

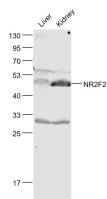
sales@bioss.com.cn

techsupport@bioss.com.cn

400-901-9800

— DATASHEET —

Host: Rabbit	Isotype: IgG	Applications: WB (1:500-2000)
Clonality: Polyclonal		Reactivity: Mouse (predicted: Human, Rat, Pig, Cow)
GeneID: 7026	SWISS: P24468	
Target: NR2F2		
Immunogen: KLH conjugated synthetic peptide derived from human NR2F2: 1-60/414.		Predicted MW.: 46 kDa
Purification: affinity purified by Protein A		Subcellular Location: Nucleus
Concentration: 1mg/ml		
Storage: 0.01M TBS (pH7.4) with 1% BSA, 0.02% Proclin300 and 50% Glycerol. Shipped at 4°C. Store at -20°C for one year. Avoid repeated freeze/thaw cycles.		
Background: NR2F2 is involved in the regulation of the apolipoprotein A-I gene transcription. It binds to DNA site A as a homodimer. It belongs to the nuclear hormone receptor family, NR2 subfamily. It has roles in angiogenesis, vascular remodeling and heart development.		

— VALIDATION IMAGES —

Sample: Liver (Mouse) Lysate at 40 ug Kidney (Mouse) Lysate at 40 ug
Primary: Anti- NR2F2 (bs-22139R) at 1/1000 dilution
Secondary: IRDye800CW Goat Anti-Rabbit IgG at 1/20000 dilution
Predicted band size: 46 kD Observed band size: 46 kD