

bs-22137R**[Primary Antibody]****LPA1 Rabbit pAb****Bioss**
ANTIBODIES

www.bioss.com.cn

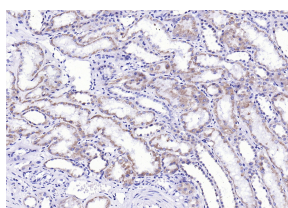
sales@bioss.com.cn

techsupport@bioss.com.cn

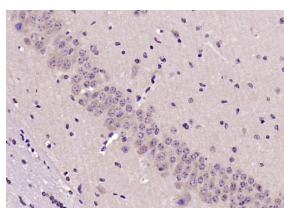
400-901-9800

— DATASHEET —

Host: Rabbit Clonality: Polyclonal GeneID: 1902 Target: LPA1 Immunogen: KLH conjugated synthetic peptide derived from human LPA1: 1-50/364. Purification: affinity purified by Protein A Concentration: 1mg/ml Storage: 0.01M TBS (pH7.4) with 1% BSA, 0.02% Proclin300 and 50% Glycerol. Shipped at 4°C. Store at -20°C for one year. Avoid repeated freeze/thaw cycles. Background: EDG2 belongs to a family of G-protein coupled receptors whose ligands are lysophospholipids. There are eight known members of the EDG receptor family and they are implicated in mediating growth-related effects such as induction of cellular proliferation, alterations in differentiation and survival, and suppression of apoptosis. They also evoke cellular effector functions that are dependent on cytoskeletal responses such as contraction, secretion, adhesion and chemotaxis. EDG receptors are developmentally regulated and differ in tissue distribution. They couple to multiple types of G proteins to signal through ras and MAP kinase, rho, phospholipase C, and several proteins not used within 12 hours. Edg2 has been reported in most human tissues, and is especially abundant in brain cortical regions. ESTs have been isolated from bone, brain, breast, connective tissue, embryo, heart/melanocyte/uterus, lung, prostate and uterus libraries.	Isotype: IgG SWISS: Q92633	Applications: IHC-P (1:100-500) IHC-F (1:100-500) IF (1:100-500) Reactivity: Human, Mouse (predicted: Rat, Rabbit, Pig, Sheep, Cow, Dog) Predicted MW.: 41 kDa Subcellular Location: Cell membrane ,Cytoplasm
--	---	--

— VALIDATION IMAGES —

Paraformaldehyde-fixed, paraffin embedded (Human kidney); Antigen retrieval by boiling in sodium citrate buffer (pH6.0) for 15min; Block endogenous peroxidase by 3% hydrogen peroxide for 20 minutes; Blocking buffer (normal goat serum) at 37°C for 30min; Antibody incubation with (LPA1) Polyclonal Antibody, Unconjugated (bs-22137R) at 1:200 overnight at 4°C, followed by operating according to SP Kit(Rabbit) (sp-0023) instructions and DAB staining.



Paraformaldehyde-fixed, paraffin embedded (mouse brain); Antigen retrieval by boiling in sodium citrate buffer (pH6.0) for 15min; Block endogenous peroxidase by 3% hydrogen peroxide for 20 minutes; Blocking buffer (normal goat serum) at 37°C for 30min; Antibody incubation with (LPA1) Polyclonal Antibody, Unconjugated (bs-22137R) at 1:200 overnight at 4°C, followed by operating according to SP Kit(Rabbit) (sp-0023) instructions and DAB staining.