

---

## RHOC Rabbit pAb

Catalog Number: bs-55187R

Target Protein: RHOC

Concentration: 1mg/ml

Form: Liquid

Host: Rabbit

Clonality: Polyclonal

Isotype: IgG

Applications: WB (1:500-2000), IHC-P (1:100-500), IHC-F (1:450-100), IF (1:50-100)

Reactivity: Human, Mouse (predicted:Rat)

Predicted MW: 22 kDa

Entrez Gene: 389

Swiss Prot: P08134

Source: Recombinant human RHOC: 1-193/193.

Purification: affinity purified by Protein A

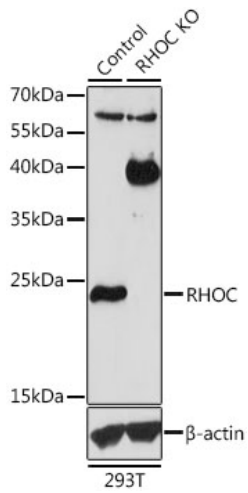
Storage: 0.01M TBS (pH7.4) with 1% BSA, 0.02% Proclin300 and 50% Glycerol.

Store at -20°C for one year. Avoid repeated freeze/thaw cycles. The lyophilized antibody is stable at room temperature for at least one month and for greater than a year when kept at -20°C. When reconstituted in sterile pH 7.4 0.01M PBS or diluent of antibody the antibody is stable for at least two weeks at 2-4°C.

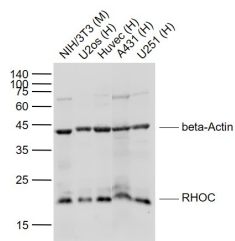
**Background:** This gene encodes a member of the Rho family of small GTPases, which cycle between inactive GDP-bound and active GTP-bound states and function as molecular switches in signal transduction cascades. Rho proteins promote reorganization of the actin cytoskeleton and regulate cell shape, attachment, and motility. The protein encoded by this gene is prenylated at its C-terminus, and localizes to the cytoplasm and plasma membrane. It is thought to be important in cell locomotion. Overexpression of this gene is associated with tumor cell proliferation and metastasis. Multiple alternatively spliced variants, encoding the same protein, have been identified. [provided by RefSeq, Jul 2008]

### VALIDATION IMAGES

---



Sample: Lane 1: 293T (Human) Cell Lysate at 25 ug Lane 2: RHOC knockout (KO) 293T (Human) Cell Lysate at 25 ug Primary: Anti-RHOC (bs-55187R) at 1/1000 dilution Secondary: HRP Goat Anti-Rabbit IgG (H+L) at 1:10000 dilution Predicted band size: 22 kD Observed band size: 22 kD



Sample: Lane 1: NIH/3T3 (Mouse) Cell Lysate at 30 ug Lane 2: U2os (Human) Cell Lysate at 30 ug Lane 3: Huvec (Human) Cell Lysate at 30 ug Lane 4: A431 (Human) Cell Lysate at 30 ug Lane 5: U251 (Human) Cell Lysate at 30 ug Primary: Anti- RHOC (bs-55187R) at 1/1000 dilution Anti-beta-Actin (bs-0061R) at 1/2000 dilution Secondary: IRDye800CW Goat Anti-Rabbit IgG at 1/20000 dilution Predicted band size: 22 kD Observed band size: 22 kD