

bs-19603R**[Primary Antibody]****SDHAF1 Rabbit pAb****BioSS**
ANTIBODIES

www.bioss.com.cn

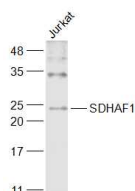
sales@bioss.com.cn

techsupport@bioss.com.cn

400-901-9800

— DATASHEET —

Host: Rabbit	Isotype: IgG	Applications: WB (1:500-2000)
Clonality: Polyclonal		
GeneID: 644096	SWISS: A6NFY7	
Target: SDHAF1		
Immunogen: KLH conjugated synthetic peptide derived from human SDHAF1: 1-100/115.		
Purification: affinity purified by Protein A		
Concentration: 1mg/ml		
Storage: 0.01M TBS (pH7.4) with 1% BSA, 0.02% Proclin300 and 50% Glycerol. Shipped at 4°C. Store at -20°C for one year. Avoid repeated freeze/thaw cycles.		Reactivity: Human, Mouse (predicted: Rat, Pig, Sheep, Cow, Dog, Horse)
Background: The succinate dehydrogenase (SDH) complex (or complex II) of the mitochondrial respiratory chain is composed of 4 individual subunits. The protein encoded by this gene resides in the mitochondria, and is essential for SDH assembly, but does not physically associate with the complex in vivo. Mutations in this gene are associated with SDH-defective infantile leukoencephalopathy (mitochondrial complex II deficiency).[provided by RefSeq, Mar 2010]		Predicted MW.: 21 kDa
		Subcellular Location: Cytoplasm

— VALIDATION IMAGES —

Sample: Jurkat(Human) Cell Lysate at 30 ug
Primary: Anti-SDHAF1 (bs-19603R) at 1/1000
dilution Secondary: IRDye800CW Goat Anti-
Rabbit IgG at 1/20000 dilution Predicted band
size: 21 kD Observed band size: 22 kD