

bs-19598R**[Primary Antibody]****Scramblase 1 Rabbit pAb****BioSS**
ANTIBODIES

www.bioss.com.cn

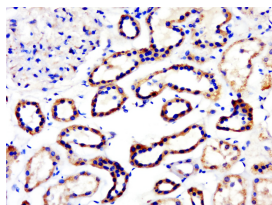
sales@bioss.com.cn

techsupport@bioss.com.cn

400-901-9800

— DATASHEET —

Host: Rabbit	Isotype: IgG	Applications: IHC-P (1:100-500) IHC-F (1:100-500) IF (1:100-500) Reactivity: Human Predicted MW.: 35 kDa Subcellular Location: Cell membrane
Clonality: Polyclonal		
GeneID: 5359	SWISS: O15162	
Target: Scramblase 1		
Immunogen: KLH conjugated synthetic peptide derived from human Scramblase 1: 201-300/318.		
Purification: affinity purified by Protein A		
Concentration: 1mg/ml		
Storage: 0.01M TBS (pH7.4) with 1% BSA, 0.02% Proclin300 and 50% Glycerol. Shipped at 4°C. Store at -20°C for one year. Avoid repeated freeze/thaw cycles.		
Background: PLSCR1 (Phospholipid Scramblase 1) is a Protein Coding gene. Diseases associated with PLSCR1 include scott syndrome. Among its related pathways are EGFR1 Signaling Pathway. GO annotations related to this gene include calcium ion binding and transcriptional activator activity, RNA polymerase II core promoter proximal region sequence-specific binding. An important paralog of this gene is PLSCR4.		

— VALIDATION IMAGES —

Paraformaldehyde-fixed, paraffin embedded (human kidney); Antigen retrieval by boiling in sodium citrate buffer (pH6.0) for 15min; Block endogenous peroxidase by 3% hydrogen peroxide for 20 minutes; Blocking buffer (normal goat serum) at 37°C for 30min; Antibody incubation with (Scramblase 1) Polyclonal Antibody, Unconjugated (bs-19598R) at 1:500 overnight at 4°C, followed by a conjugated secondary (sp-0023) for 20 minutes and DAB staining.