

bs-19597R

[Primary Antibody]

PUS7 Rabbit pAb

Bioss
ANTIBODIES

www.bioss.com.cn

sales@bioss.com.cn

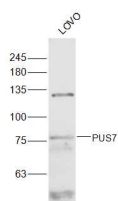
techsupport@bioss.com.cn

400-901-9800

— DATASHEET —

Host: Rabbit	Isotype: IgG	Applications: WB (1:500-2000)
Clonality: Polyclonal		Reactivity: Human (predicted: Mouse, Rat, Rabbit, Pig, Sheep, Chicken)
GeneID: 54517	SWISS: Q96PZ0	
Target: PUS7		Predicted MW.: 75 kDa
Immunogen: KLH conjugated synthetic peptide derived from human PUS7: 371-470/661.		Subcellular Location: Nucleus
Purification: affinity purified by Protein A		
Concentration: 1mg/ml		
Storage: 0.01M TBS (pH7.4) with 1% BSA, 0.02% Proclin300 and 50% Glycerol. Shipped at 4°C. Store at -20°C for one year. Avoid repeated freeze/thaw cycles.		

— VALIDATION IMAGES —



Sample: LOVO(Human) Cell Lysate at 30 ug
Primary: Anti-PUS7 (bs-19597R) at 1/300 dilution
Secondary: IRDye800CW Goat Anti-Rabbit IgG at 1/20000 dilution Predicted band size: 75 kD
Observed band size: 75 kD