

**bs-19594R****[ Primary Antibody ]****PU.1/Spi1 Rabbit pAb****Bioss**  
ANTIBODIES

www.bioss.com.cn

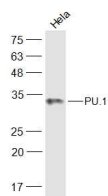
sales@bioss.com.cn

techsupport@bioss.com.cn

400-901-9800

**— DATASHEET —**

<b>Host:</b> Rabbit	<b>Isotype:</b> IgG	<b>Applications:</b> WB (1:500-2000)
<b>Clonality:</b> Polyclonal		<b>Reactivity:</b> Human (predicted: Mouse, Rat, Pig, Sheep, Cow, Dog, Horse)
<b>GeneID:</b> 6688	<b>SWISS:</b> P17947	<b>Predicted MW.:</b> 31 kDa
<b>Target:</b> PU.1/Spi1		<b>Subcellular Location:</b> Nucleus
<b>Immunogen:</b> KLH conjugated synthetic peptide derived from human PU.1/Spi1: 151-250/270.		
<b>Purification:</b> affinity purified by Protein A		
<b>Concentration:</b> 1mg/ml		
<b>Storage:</b> 0.01M TBS (pH7.4) with 1% BSA, 0.02% Proclin300 and 50% Glycerol. Shipped at 4°C. Store at -20°C for one year. Avoid repeated freeze/thaw cycles.		
<b>Background:</b> The enzyme encoded by this gene catalyzes the elimination of inorganic triphosphate from dihydroneopterin triphosphate, which is the second and irreversible step in the biosynthesis of tetrahydrobiopterin from GTP. Tetrahydrobiopterin, also known as BH(4), is an essential cofactor and regulator of various enzyme activities, including enzymes involved in serotonin biosynthesis and NO synthase activity. Mutations in this gene result in hyperphenylalaninemia. [provided by RefSeq, Oct 2008]		

**— VALIDATION IMAGES —**

Sample: HeLa(Human) Cell Lysate at 30 ug  
Primary: Anti-PU.1 (bs-19594R) at 1/300 dilution  
Secondary: IRDye800CW Goat Anti-Rabbit IgG at 1/20000 dilution Predicted band size: 31 kD  
Observed band size: 31 kD