
CD24 Rabbit pAb

Catalog Number: bs-4891R

Target Protein: CD24

Concentration: 1mg/ml

Form: Liquid

Host: Rabbit

Clonality: Polyclonal

Isotype: IgG

Applications: **WB** (1:500-2000), **Flow-Cyt** (1ug/Test)

Reactivity: Human, Mouse (predicted: Rat)

Predicted MW: 8 kDa

Detected MW: 30-45 kDa

Subcellular Cell membrane

Locations:

Entrez Gene: 12484

Swiss Prot: P24807

Source: KLH conjugated synthetic peptide derived from mouse CD24: 27-53/76.

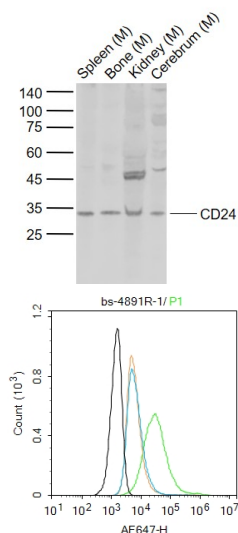
Purification: affinity purified by Protein A

Storage: 0.01M TBS (pH7.4) with 1% BSA, 0.02% Proclin300 and 50% Glycerol.

Shipped at 4°C. Store at -20°C for one year. Avoid repeated freeze/thaw cycles.

Background: This gene encodes a sialoglycoprotein that is expressed on mature granulocytes and B cells and modulates growth and differentiation signals to these cells. The precursor protein is cleaved to a short 32 amino acid mature peptide which is anchored via a glycosyl phosphatidylinositol (GPI) link to the cell surface. This gene was missing from previous genome assemblies, but is properly located on chromosome 6. Non-transcribed pseudogenes have been designated on chromosomes 1, 15, 20, and Y. Alternative splicing results in multiple transcript variants. [provided by RefSeq, Apr 2014]

VALIDATION IMAGES



Sample: Lane 1: Mouse Spleen tissue lysates Lane 2: Mouse Bone tissue lysates Lane 3: Mouse Kidney tissue lysates Lane 4: Mouse Cerebrum tissue lysates Primary: Anti-CD24 (bs-4891R) at 1/1000 dilution Secondary: IRDye800CW Goat Anti-Rabbit IgG at 1/20000 dilution Predicted band size: 8 kD Observed band size: 33 kD

Blank control: SH-SY5Y. Primary Antibody (green line): Rabbit Anti-CD24 antibody (bs-4891R) Dilution: 1µg /10⁶ cells; Isotype Control Antibody (orange line): Rabbit IgG . Secondary Antibody : Goat anti-rabbit IgG-AF647 Dilution: 1µg /test. Protocol The cells were incubated in 5%BSA to block non-specific protein-protein interactions for 30 min at room temperature .Cells stained with Primary Antibody for 30 min at room temperature. The secondary antibody used for 40 min at room temperature. Acquisition of 20,000 events was performed.

PRODUCT SPECIFIC PUBLICATIONS

[IF=3.869] Sinkemani A et al. Nucleus Pulposus Cell Conditioned Medium Promotes Mesenchymal Stem Cell Differentiation into Nucleus Pulposus-Like Cells under Hypoxic Conditions *Stem Cells Int.* 2020 Dec 23;2020:8882549. IF ; Rat . 33424982