

## Laminin Beta 2 Rabbit pAb

Catalog Number: bs-7504R

Target Protein: Laminin Beta 2

Concentration: 1mg/ml

Form: Liquid

Host: Rabbit

Clonality: Polyclonal

Isotype: IgG

Applications: IHC-P (1:100-500), IHC-F (1:100-500), IF (1:100-500)

Reactivity: Human (predicted: Mouse, Rat, Rabbit, Sheep, Cow, Chicken, Dog, Horse)

Predicted MW: 192 kDa

Entrez Gene: 3913

Swiss Prot: P55268

Source: KLH conjugated synthetic peptide derived from human Laminin Beta 2/Laminin S: 1701-1798/1798.

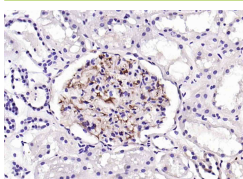
Purification: affinity purified by Protein A

Storage: 0.01M TBS (pH7.4) with 1% BSA, 0.02% Proclin300 and 50% Glycerol.

Shipped at 4°C. Store at -20°C for one year. Avoid repeated freeze/thaw cycles.

**Background:** Laminin S binds to cells via a high affinity receptor, laminin is thought to mediate the attachment, migration and organization of cells into tissues during embryonic development by interacting with other extracellular matrix components. Laminin S is a complex glycoprotein, consisting of three different polypeptide chains (alpha, beta, gamma), which are bound to each other by disulfide bonds into a cross-shaped molecule comprising one long and three short arms with globules at each end. Beta 2 is a subunit of laminin 3 (Laminin S), laminin 4 (S merosin), and laminin 7 (KS laminin).

### VALIDATION IMAGES



Paraformaldehyde-fixed, paraffin embedded (Human kidney); Antigen retrieval by boiling in sodium citrate buffer (pH6.0) for 15min; Block endogenous peroxidase by 3% hydrogen peroxide for 20 minutes; Blocking buffer (normal goat serum) at 37°C for 30min; Antibody incubation with (Laminin Beta 2) Polyclonal Antibody, Unconjugated (bs-7504R) at 1:200 overnight at 4°C, followed by operating according to SP Kit(Rabbit) (sp-0023) instructions and DAB staining.