

bs-6787R**[Primary Antibody]**

Bioss
ANTIBODIES

www.bioss.com.cn

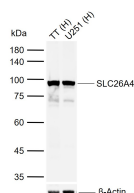
sales@bioss.com.cn

techsupport@bioss.com.cn

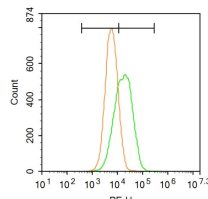
400-901-9800

SLC26A4 Rabbit pAb**DATASHEET**

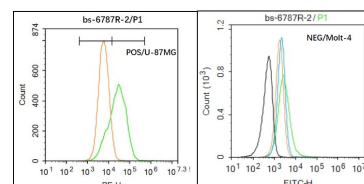
Host: Rabbit	Isotype: IgG	Applications: WB (1:500-2000) Flow-Cyt (1 μ g/test) ELISA (1:5000-10000)
Clonality: Polyclonal		
GeneID: 5172	SWISS: O43511	
Target: SLC26A4		
Immunogen: KLH conjugated synthetic peptide derived from human Solute carrier family 26 member 4: 301-400/780.		
Purification: affinity purified by Protein A		
Concentration: 1mg/ml		
Storage: 0.01M TBS (pH7.4) with 1% BSA, 0.02% Proclin300 and 50% Glycerol. Shipped at 4°C. Store at -20°C for one year. Avoid repeated freeze/thaw cycles.		
Background: This gene belongs to the solute carrier 26 family, whose members encode anion transporter proteins. This particular family member encodes a protein involved in transporting chloride, oxalate, sulfate and bicarbonate. Several alternatively spliced transcript variants of this gene, encoding distinct isoforms, have been described, but the full-length nature of some of these variants has not been determined. [provided by RefSeq, Jul 2008].		
		Reactivity: Human (predicted: Mouse, Rat, Pig, Cow, Dog, Horse)
		Predicted MW.: 93 kDa
		Subcellular Location: Cell membrane

VALIDATION IMAGES

Sample: Lane 1: Human TT cell lysates Lane 2: Human U251 cell lysates Primary: Anti-SLC26A4 (bs-6787R) at 1/1000 dilution Secondary: IRDye800CW Goat Anti-Rabbit IgG at 1/20000 dilution Predicted band size: 93 kDa Observed band size: 93 kDa



Blank control: U87MG. Primary Antibody (green line): Rabbit Anti-SLC26A4 antibody (bs-6787R) Dilution: 1 μ g / 10⁶ cells; Isotype Control Antibody (orange line): Rabbit IgG . Secondary Antibody : Goat anti-rabbit IgG-PE Dilution: 1 μ g /test. The cells were incubated in 5%BSA to block non-specific protein-protein interactions for 30 min at room temperature .Cells stained with Primary Antibody for 30 min at room temperature. The secondary antibody used for 40 min at room temperature. Acquisition of 20,000 events was performed.



Black line : Positive blank control (U87MG); Negative blank control (Molt4) Green line : Primary Antibody (Rabbit Anti-SLC26A4 antibody (bs-6787R)) Orange line: Isotype Control Antibody (Rabbit IgG) . Blue line : Secondary Antibody (Goat anti-rabbit IgG-PE)/(Goat anti-rabbit IgG-AF488) U87MG (Positive) and Molt4 (Negative control) cells (black) were incubated in 5% BSA blocking buffer for 30 min at room temperature. Cells were then stained with SLC26A4 Antibody(bs-6787R)at 1:50 dilution in blocking buffer and incubated for 30 min at room temperature, washed twice with 2% BSA in PBS, followed by secondary antibody(blue) incubation for 40 min at room temperature. Acquisitions of 20,000 events were performed. Cells stained with primary antibody (green), and isotype control (orange).

SELECTED CITATIONS

- **[IF=2.765]** Andharia et al. Electrophysiological properties of anion exchangers in the luminal membrane of guinea pig pancreatic duct cells. (2018) Pflugers.Arch. 470:897-907 IHC,WB ;guinea pigs. 29399744
- **[IF=3.164]** Yamauchi T et al. Na⁺-Cl⁻ cotransporter-mediated chloride uptake contributes to hypertension and renal

Important Note: This product as supplied is intended for research use only, not for use in human, therapeutic or diagnostic applications.

damage in aldosterone-infused rats. Am J Physiol Renal Physiol. 2018 Aug 1;315(2):F300-F312. WB ;Rat. 29631358