

MAGEA10 Rabbit pAb

Catalog Number: bs-6816R

Target Protein: MAGEA10

Concentration: 1mg/ml

Form: Liquid

Host: Rabbit

Clonality: Polyclonal

Isotype: IgG

Applications: WB (1:500-2000)

Reactivity: Human, Mouse, Rat (predicted:Sheep, Cow)

Predicted MW: 41 kDa

Entrez Gene: 4109

Swiss Prot: P43363

Source: KLH conjugated synthetic peptide derived from human MAGEA10: 241-340/369.

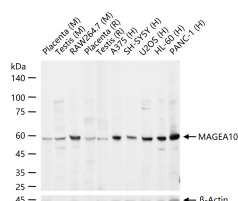
Purification: affinity purified by Protein A

Storage: 0.01M TBS (pH7.4) with 1% BSA, 0.02% Proclin300 and 50% Glycerol.

Shipped at 4°C. Store at -20°C for one year. Avoid repeated freeze/thaw cycles.

Background: This gene is a member of the MAGEA gene family. The members of this family encode proteins with 50 to 80% sequence identity to each other. The promoters and first exons of the MAGEA genes show considerable variability, suggesting that the existence of this gene family enables the same function to be expressed under different transcriptional controls. The MAGEA genes are clustered at chromosomal location Xq28. They have been implicated in some hereditary disorders, such as dyskeratosis congenita. Alternative splicing results in multiple transcript variants. Read-through transcription also exists between this gene and the downstream melanoma antigen family A, 5 (MAGEA5) gene.[provided by RefSeq, Oct 2011].

VALIDATION IMAGES



25 ug total protein per lane of various lysates (see on figure) probed with MAGEA10 polyclonal antibody, unconjugated (bs-6816R) at 1:1000 dilution and 4°C overnight incubation. Followed by conjugated secondary antibody incubation at r.t. for 60 min.