

bs-6373R

[Primary Antibody]

CGR19 Rabbit pAb

Bioss
ANTIBODIES

www.bioss.com.cn

sales@bioss.com.cn

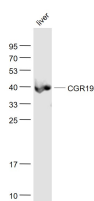
techsupport@bioss.com.cn

400-901-9800

— DATASHEET —

| | | |
|--|----------------------|--|
| Host: Rabbit | Isotype: IgG | Applications: WB (1:500-2000) |
| Clonality: Polyclonal | | Reactivity: Mouse (predicted: Human, Rat, Pig, Sheep, Cow, Dog) |
| GeneID: 10668 | SWISS: Q99675 | |
| Target: CGR19 | | Predicted MW.: 38 kDa |
| Immunogen: KLH conjugated synthetic peptide derived from human CGR19: 45-150/332. | | Subcellular Location: Nucleus |
| Purification: affinity purified by Protein A | | |
| Concentration: 1mg/ml | | |
| Storage: 0.01M TBS (pH7.4) with 1% BSA, 0.02% Proclin300 and 50% Glycerol. Shipped at 4°C. Store at -20°C for one year. Avoid repeated freeze/thaw cycles. | | |
| Background: CGR19 is involved in the negative regulation of cell proliferation and cell cycle arrest in response to stress. | | |

— VALIDATION IMAGES —



Sample: Liver (Mouse) Lysate at 40 ug Primary:

Anti- CGR19 (bs-6373R) at 1/1000 dilution

Secondary: IRDye800CW Goat Anti-Rabbit IgG at

1/20000 dilution Predicted band size: 38 kD

Observed band size: 38 kD