

bs-6815R**[Primary Antibody]****Bioss**
ANTIBODIES

www.bioss.com.cn

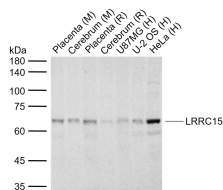
sales@bioss.com.cn

techsupport@bioss.com.cn

400-901-9800

LRRC15 Rabbit pAb**DATASHEET**

Host: Rabbit Clonality: Polyclonal GeneID: 131578 Target: LRRC15 Immunogen: KLH conjugated synthetic peptide derived from human LRRC15: 251-350/581. < Extracellular > Purification: affinity purified by Protein A Concentration: 1mg/ml Storage: 0.01M TBS (pH7.4) with 1% BSA, 0.02% Proclin300 and 50% Glycerol. Shipped at 4°C. Store at -20°C for one year. Avoid repeated freeze/thaw cycles. Background: LRRC15 may contribute to regulation of cell-matrix adhesion interactions with respect to astrocyte recruitment around senile plaques in Alzheimer's disease brain. LRRC15 is induced by EWS-WT1(+KTS) in the tumor DSRCT and may play a role in cellular invasion.	Isotype: IgG SWISS: Q8TF66	Applications: WB (1:500-2000) ELISA (1:5000-10000) Reactivity: Human, Mouse, Rat (predicted: Rabbit, Pig, Sheep, Cow, Dog, Horse) Predicted MW.: 62 kDa Subcellular Location: Cell membrane
--	---	--

VALIDATION IMAGES

Sample: Lane 1: Mouse Placenta tissue lysates
Lane 2: Mouse Cerebrum tissue lysates Lane 3:
Rat Placenta tissue lysates Lane 4: Rat Cerebrum
tissue lysates Lane 5: Human U87MG cell lysates
Lane 6: Human U-2 OS cell lysates Lane 7:
Human HeLa cell lysates Primary: Anti-LRRC15
(bs-6815R) at 1/1000 dilution Secondary:
IRDye800CW Goat Anti-Rabbit IgG at 1/20000
dilution Predicted band size: 62 kDa Observed
band size: 64 kDa

SELECTED CITATIONS

- **[IF=6.107]** Toriumi Kensuke. et al. LRRC15 Expression Indicates High Level of Stemness Regulated by TWIST1 in Mesenchymal Stem Cells. ISCIENCE. 2022 Dec 30 FCM ;Human, Mouse. 10.2139/ssrn.4314976