

CTAG2 Rabbit pAb

Catalog Number: bs-6807R

Target Protein: CTAG2

Concentration: 1mg/ml

Form: Liquid

Host: Rabbit

Clonality: Polyclonal

Isotype: IgG

Applications: WB (1:500-2000)

Reactivity: Human

Predicted MW: 23 kDa

Entrez Gene: 30848

Swiss Prot: O75638

Source: KLH conjugated synthetic peptide derived from human CTAG2: 121-210/210.

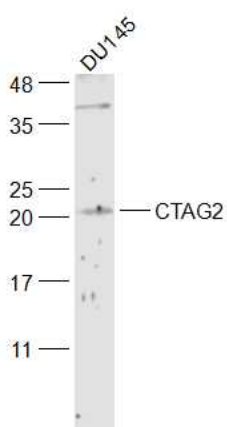
Purification: affinity purified by Protein A

Storage: 0.01M TBS (pH7.4) with 1% BSA, 0.02% Proclin300 and 50% Glycerol.

Shipped at 4°C. Store at -20°C for one year. Avoid repeated freeze/thaw cycles.

Background: Testis and very low level in placenta and in some uterus samples. Observed in 25-50% of tumor samples of melanomas, non-small-cell lung carcinomas, bladder, prostate and head and neck cancers.

VALIDATION IMAGES



Sample: DU145(Human) Cell Lysate at 30 ug Primary: Anti-CTAG2 (bs-6807R) at 1/300 dilution Secondary: IRDye800CW Goat Anti-Rabbit IgG at 1/20000 dilution Predicted band size: 23 kD Observed band size: 21 kD

PRODUCT SPECIFIC PUBLICATIONS

[IF=1.871] Liu J et al. Identification of cancer/testis antigen 2 gene as a potential hepatocellular carcinoma therapeutic target by hub gene screening with topological analysis. Oncol Lett. 2019 Nov;18(5):4778-4788. IHC ; Human . 31611988