

bs-13285R

[Primary Antibody]

GARNL3 Rabbit pAb

Bioss
ANTIBODIES

www.bioss.com.cn

sales@bioss.com.cn

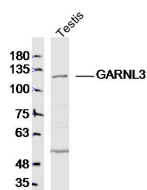
techsupport@bioss.com.cn

400-901-9800

— DATASHEET —

Host: Rabbit	Isotype: IgG	Applications: WB (1:500-2000)
Clonality: Polyclonal		Reactivity: Mouse (predicted: Human, Rat)
GeneID: 84253	SWISS: Q5VWW2	
Target: GARNL3		Predicted MW.: 113 kDa
Immunogen: KLH conjugated synthetic peptide derived from human GARNL3: 521-620/1013.		Subcellular Location: Cell membrane
Purification: affinity purified by Protein A		
Concentration: 1mg/ml		
Storage: 0.01M TBS (pH7.4) with 1% BSA, 0.02% Proclin300 and 50% Glycerol. Shipped at 4°C. Store at -20°C for one year. Avoid repeated freeze/thaw cycles.		
Background: GARNL3 (GTPase Activating Rap/RanGAP Domain Like 3) is a Protein Coding gene. GO annotations related to this gene include GTPase activator activity. An important paralog of this gene is SIPA1L1.		

— VALIDATION IMAGES —



Sample: Testis(Mouse) Lysate at 40 ug Primary:
Anti-GARNL3(bs-13285R) at 1/300 dilution
Secondary: IRDye800CW Goat Anti-Rabbit IgG at
1/20000 dilution Predicted band size: 113kD
Observed band size: 113kD