

CXCL16 Rabbit pAb

Catalog Number: bs-8871R

Target Protein: CXCL16

Concentration: 1mg/ml

Form: Liquid

Host: Rabbit

Clonality: Polyclonal

Isotype: IgG

Applications: WB (1:500-2000)

Reactivity: Human

Predicted MW: 24 kDa

Entrez Gene: 58191

Swiss Prot: Q9H2A7

Source: KLH conjugated synthetic peptide derived from human CXCL16: 41-140/254.

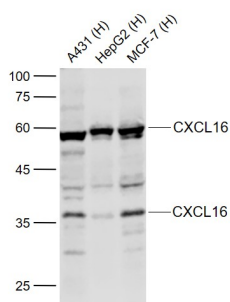
Purification: affinity purified by Protein A

Storage: 0.01M TBS (pH7.4) with 1% BSA, 0.02% Proclin300 and 50% Glycerol.

Shipped at 4°C. Store at -20°C for one year. Avoid repeated freeze/thaw cycles.

Background: CXCL16 acts as a scavenger receptor on macrophages, which specifically binds to OxLDL (oxidized low density lipoprotein), suggesting that it may be involved in pathophysiology such as atherogenesis. It induces a strong chemotactic response and calcium mobilization. It binds to CXCR6/Bonzo.

VALIDATION IMAGES



Sample: Lane 1: A431 (Human) Cell Lysate at 30 ug Lane 2: HepG2 (Human) Cell Lysate at 30 ug Lane 3: MCF-7 (Human) Cell Lysate at 30 ug Primary: Anti-CXCL16 (bs-8871R) at 1/1000 dilution Secondary: IRDye800CW Goat Anti-Rabbit IgG at 1/20000 dilution Predicted band size: 55/34 kD Observed band size: 58/36 kD