
FOXF2 Rabbit pAb

Catalog Number: bs-13201R

Target Protein: FOXF2

Concentration: 1mg/ml

Form: Liquid

Host: Rabbit

Clonality: Polyclonal

Isotype: IgG

Applications: WB (1:500-2000)

Reactivity: Mouse (predicted:Human, Rat, Chicken)

Predicted MW: 46 kDa

Entrez Gene: 2295

Swiss Prot: Q12947

Source: KLH conjugated synthetic peptide derived from human FOXF2: 65-160/444.

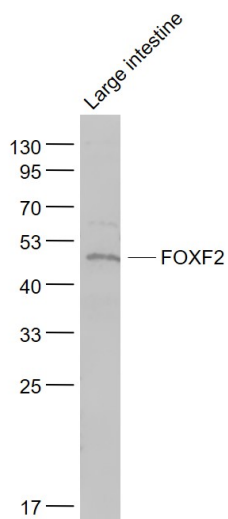
Purification: affinity purified by Protein A

Storage: 0.01M TBS (pH7.4) with 1% BSA, 0.02% Proclin300 and 50% Glycerol.

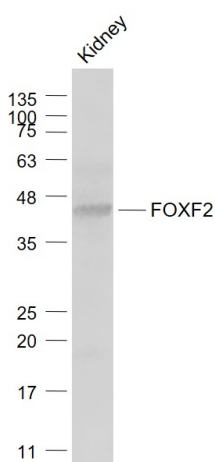
Shipped at 4°C. Store at -20°C for one year. Avoid repeated freeze/thaw cycles.

Background: The FOX family of transcription factors share a common DNA binding domain termed a winged-helix or forkhead domain. Many FOX proteins play important roles in development, metabolism, cancer and aging. Development of the vertebrate gut is controlled by paracrine crosstalk between the endodermal epithelium and the associated splanchnic mesoderm. FOXF2 (forkhead box F2), also known as FKHL or FREAC2, is expressed in lung and placenta, and has been shown to transcriptionally activate several lung-specific genes. FOXF2 interacts with transcription factors TFIIB and TBP, and may be involved in regulating transcription in embryogenesis and pattern formation in multicellular organisms. FOXF2-deficient mice develop cleft palate and an abnormal tongue, which suggests that FOXF2 may be critical for palatogenesis.

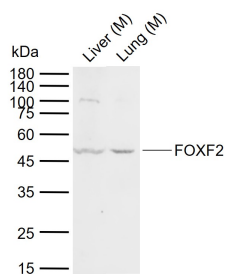
VALIDATION IMAGES



Sample: Large intestine (Mouse) Lysate at 40 ug Primary: Anti- FOXF2 (bs-13201R) at 1/1000 dilution
Secondary: IRDye800CW Goat Anti-Rabbit IgG at 1/20000 dilution Predicted band size: 46 kD Observed band size: 46 kD



Sample: Kidney (Mouse) Lysate at 40 ug Primary: Anti- FOXF2 (bs-13201R) at 1/1000 dilution Secondary: IRDye800CW Goat Anti-Rabbit IgG at 1/20000 dilution Predicted band size: 46 kD Observed band size: 46 kD



Sample: Lane 1: Mouse Liver tissue lysates Lane 2: Mouse Lung tissue lysates Primary: Anti-FOXF2 (bs-13201R) at 1/1000 dilution Secondary: IRDye800CW Goat Anti-Rabbit IgG at 1/20000 dilution Predicted band size: 46 kDa Observed band size: 46 kDa