

bs-8383R

[Primary Antibody]

UBE2Q1 Rabbit pAb

BioSS
ANTIBODIES

www.bioss.com.cn

sales@bioss.com.cn

techsupport@bioss.com.cn

400-901-9800

DATASHEET

Host: Rabbit

Isotype: IgG

Clonality: Polyclonal

Target: UBE2Q1

Immunogen: KLH conjugated synthetic peptide derived from human UBE2Q1: 321-422/422.

Purification: affinity purified by Protein A

Concentration: 1mg/ml

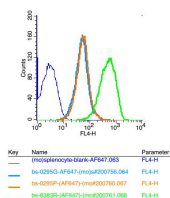
Storage: 0.01M TBS (pH7.4) with 1% BSA, 0.02% Proclin300 and 50% Glycerol.
Shipped at 4°C. Store at -20°C for one year. Avoid repeated freeze/thaw cycles.

Applications: Flow-Cyt (2µg /Test)

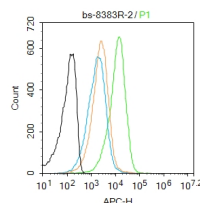
Reactivity: Mouse, Rat
(predicted: Human, Rabbit, Sheep, Cow, Dog, Horse)

Predicted MW.: 46 kDa

VALIDATION IMAGES



cells:mouse splenocyte Concentration: 2µg/10⁶ cells, 4°C incubate 30min.



Blank control: Mouse spleen. Primary Antibody (green line): Rabbit Anti-UBE2Q1 antibody (bs-8383R) Dilution: 2µg /10⁶ cells; Isotype Control Antibody (orange line): Rabbit IgG . Secondary Antibody : Goat anti-rabbit IgG-AF647 Dilution: 1µg /test. Protocol The cells were fixed with 4% PFA (10min at room temperature)and then permeabilized with 90% ice-cold methanol for 20 min at -20°C. The cells were then incubated in 5%BSA to block non-specific protein-protein interactions for 30 min at room temperature .Cells stained with Primary Antibody for 30 min at room temperature. The secondary antibody used for 40 min at room temperature. Acquisition of 20,000 events was performed.