

bsm-54470R**[Primary Antibody]**

Bioss
ANTIBODIES

www.bioss.com.cn

sales@bioss.com.cn

techsupport@bioss.com.cn

400-901-9800

CD34 Recombinant Rabbit mAb

DATASHEET

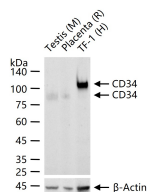
Host: Rabbit**Isotype:** IgG**Clonality:** Recombinant**CloneNo.:** 7A1**GeneID:** 947**SWISS:** P28906**Target:** CD34**Purification:** affinity purified by Protein A**Concentration:** 1mg/ml**Storage:** 0.01M TBS (pH7.4) with 1% BSA, 0.02% Proclin300 and 50% Glycerol.

Store at -20°C for one year. Avoid repeated freeze/thaw cycles. The lyophilized antibody is stable at room temperature for at least one month and for greater than a year when kept at -20°C. When reconstituted in sterile pH 7.4 0.01M PBS or diluent of antibody the antibody is stable for at least two weeks at 2-4°C.

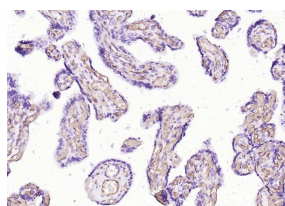
Background: The highly glycosylated 75-120 kD antigen CD34 is possibly an adhesion molecule with a putative role in early hematopoiesis by mediating the attachment of stem cells to the bone marrow extracellular matrix or directly to stromal cells. It could act as a scaffold for the attachment of lineage specific glycans, allowing stem cells to bind to lectins expressed by stromal cells or other marrow components. CD34 is thought to have a role in presenting carbohydrate ligands to selectins. The intracellular chain of the CD34 antigen is a site of phosphorylation by activated protein kinase C, suggesting a putative role in signal transduction. Two isoforms of CD34 have been reported to be generated by alternative splicing. CD34 is highly expressed on hematopoietic progenitors, as well as on endothelial cells, brain, and testis. Staining for CD34 has been used to measure angiogenesis, which reportedly predicts tumor recurrence.

Applications: WB (1:1000-2000)**IHC-P** (1:50-200)**IHC-F** (1:50-200)**IF** (1:50-200)**ELISA** (1:5000-10000)**Reactivity:** Human, Mouse, Rat**Predicted MW.:** 39 kDa**Subcellular Location:** Cell membrane

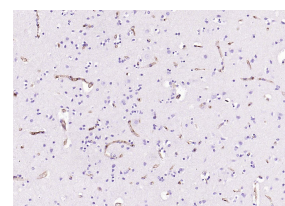
VALIDATION IMAGES



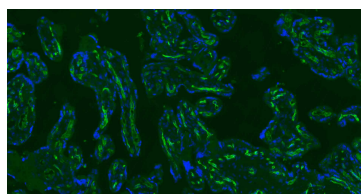
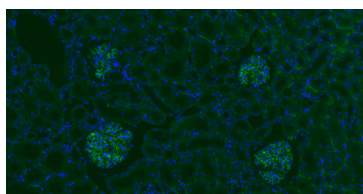
25 ug total protein per lane of various lysates (see on figure) probed with CD34 monoclonal antibody, unconjugated (bsm-54470R) at 1:1000 dilution and 4°C overnight incubation. Followed by conjugated secondary antibody incubation at r.t. for 60 min.



Paraformaldehyde-fixed, paraffin embedded (human placenta); Antigen retrieval by boiling in sodium citrate buffer (pH6.0) for 15min; Block endogenous peroxidase by 3% hydrogen peroxide for 20 minutes; Blocking buffer (normal goat serum) at 37°C for 30min; Incubation with (Monoamine Oxidase B) Polyclonal Antibody, Unconjugated (bs-11297R) at 1:200 overnight at 4°C, followed by operating according to SP Kit(Rabbit) (sp-0023) instructions and DAB staining.



Paraformaldehyde-fixed, paraffin embedded (human brain); Antigen retrieval by boiling in EDTA buffer (pH9.0) for 15min; Block endogenous peroxidase by 3% hydrogen peroxide for 20 minutes; Blocking buffer (normal goat serum) at 37°C for 30min; Incubation with (CD34) Monoclonal Antibody, Unconjugated (bsm-54470R) at 1:200 overnight at 4°C, followed by operating according to SP Kit(Rabbit) (sp-0023) instructions and DAB staining.



Important Note: This product as supplied is intended for research use only, not for use in human, therapeutic or diagnostic applications.

Paraformaldehyde-fixed, paraffin embedded
Mouse Kidney; Antigen retrieval by boiling in
sodium citrate buffer (pH6.0) for 15 min;
Antibody incubation with CD34 Polyclonal
Antibody, Unconjugated (bsm-54470R) at 1:100
overnight at 4°C. Followed by conjugated Goat
Anti-Rabbit IgG antibody (green, bs-0295G-
BF488), DAPI (blue, C02-04002) was used to stain
the cell nuclei.

Paraformaldehyde-fixed, paraffin embedded
Human Placenta; Antigen retrieval by boiling in
sodium citrate buffer (pH6.0) for 15 min;
Antibody incubation with CD34 Polyclonal
Antibody, Unconjugated (bsm-54470R) at 1:100
overnight at 4°C. Followed by conjugated Goat
Anti-Rabbit IgG antibody (green, bs-0295G-
BF488), DAPI (blue, C02-04002) was used to stain
the cell nuclei.

— SELECTED CITATIONS —

- **[IF=3.575]** Li Li. et al. Circ_LPAR3 promotes the progression of oral squamous cell carcinoma (OSCC). Biochem Bioph Res Co. 2021 Dec;; IHC ;Mouse. 34922206