

GIPC3 Rabbit pAb

Catalog Number: bs-16246R

Target Protein: GIPC3

Concentration: 1mg/ml

Form: Liquid

Host: Rabbit

Clonality: Polyclonal

Isotype: IgG

Applications: WB (1:500-2000)

Reactivity: Human (predicted:Mouse, Rat, Cow, Dog)

Predicted MW: 34 kDa

Entrez Gene: 126326

Swiss Prot: Q8TF64

Source: KLH conjugated synthetic peptide derived from human GIPC3: 151-250/312.

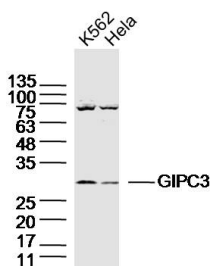
Purification: affinity purified by Protein A

Storage: 0.01M TBS (pH7.4) with 1% BSA, 0.02% Proclin300 and 50% Glycerol.

Shipped at 4°C. Store at -20°C for one year. Avoid repeated freeze/thaw cycles.

Background: The protein encoded by this gene belongs to the GIPC family. Studies in mice suggest that this gene is required for postnatal maturation of the hair bundle and long-term survival of hair cells and spiral ganglion in the ear. Mutations in this gene are associated with autosomal recessive deafness. [provided by RefSeq, Dec 2011]

VALIDATION IMAGES



Sample: K562 (Human)Cell Lysate at 40 ug HeLa(Human) Cell Lysate at 40 ug Primary: Anti-GIPC3(bs-16246R)at 1/300 dilution Secondary: IRDye800CW Goat Anti-RabbitIgG at 1/20000 dilution
Predicted band size: 34kD Observed band size: 30kD