

bs-16245R**[Primary Antibody]****GIN1 Rabbit pAb****BioSS**
ANTIBODIES

www.bioss.com.cn

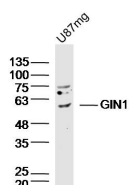
sales@bioss.com.cn

techsupport@bioss.com.cn

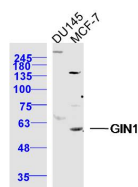
400-901-9800

— DATASHEET —

Host: Rabbit	Isotype: IgG	Applications: WB (1:500-2000)
Clonality: Polyclonal		Reactivity: Human
GeneID: 54826	SWISS: Q9NXP7	
Target: GIN1		
Immunogen: KLH conjugated synthetic peptide derived from human GIN1: 441-522/522.		Predicted MW.: 60 kDa
Purification: affinity purified by Protein A		Subcellular Location: Nucleus
Concentration: 1mg/ml		
Storage: 0.01M TBS (pH7.4) with 1% BSA, 0.02% Proclin300 and 50% Glycerol. Shipped at 4°C. Store at -20°C for one year. Avoid repeated freeze/thaw cycles.		
Background: GIN1 is a 522 amino acid protein containing one integrase catalytic domain. Widely expressed, GIN1 is also found in tumors originating from parathyroid gland, colon, stomach, bladder, uterus and prostate. Three isoforms of GIN1 are produced by alternative splicing events. The gene encoding GIN1 maps to human chromosome 5q21.1. Chromosome 5 contains 181 million base pairs and comprises nearly 6% of the human genome. Deletion of the p arm of chromosome 5 leads to Cri du chat syndrome, while deletion of the q arm of chromosome 5 altogether is common in therapy-related acute myelogenous leukemias and myelodysplastic syndrome. Treacher Collins syndrome, Cockayne syndrome and familial adenomatous polyposis are also associated with chromosome 5.		

— VALIDATION IMAGES —

Sample: U87mg Cell (Human) Lysate at 40 ug
 Primary: Anti-GIN1(bs-16245R) at 1/300 dilution
 Secondary: IRDye800CW Goat Anti-Rabbit IgG at 1/20000 dilution
 Predicted band size: 60kD
 Observed band size: 60kD



Sample: DU145 Cell (Human) Lysate at 40 ug
 MCF-7 Cell (Human) Lysate at 40 ug
 Primary: Anti-GIN1 (bs-16245R) at 1/300 dilution
 Secondary: IRDye800CW Goat Anti-Rabbit IgG at 1/20000 dilution
 Predicted band size: 60 kD
 Observed band size: 60 kD