

bs-23908R**[Primary Antibody]****BDKRB1 Rabbit pAb****BioSS**
ANTIBODIES

www.bioss.com.cn

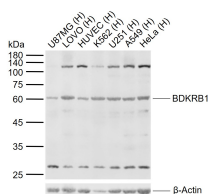
sales@bioss.com.cn

techsupport@bioss.com.cn

400-901-9800

— DATASHEET —

Host: Rabbit	Isotype: IgG	Applications: WB (1:500-2000)
Clonality: Polyclonal		Reactivity: Human
GeneID: 623	SWISS: P46663	
Target: BDKRB1		
Immunogen: KLH conjugated synthetic peptide derived from human BDKRB1 : 1-100/353. < Extracellular >		Predicted MW.: 40 kDa
Purification: affinity purified by Protein A		Subcellular Location: Cell membrane
Concentration: 1mg/1ml		
Storage: 0.01M TBS (pH7.4) with 1% BSA, 0.02% Proclin300 and 50% Glycerol. Shipped at 4°C. Store at -20°C for one year. Avoid repeated freeze/thaw cycles.		
Background: Kinins are important biologically active peptides that mediate cardiovascular homeostasis, inflammation and nociception. Bradykinin, the major effector peptide of the kallikrein-kinin system, is regulated by angiotensin-converting enzyme (ACE), which degrades the peptide. Bradykinin normally exerts its effects through the activation of two seven transmembrane G-protein coupled receptors, named B1 and B2. The B2 receptor is constitutively expressed and preferentially binds full length bradykinin. Deletion of the B2 receptor leads to salt-sensitive hypertension and altered nociception in mice. The B1 receptor binds to derivatives of bradykinin and kallidin, which are produced by carboxypeptidase action to generate the products des-Arg9-bradykinin and des-Arg10-kallidin, respectively. The expression of the B1 receptor is inducible by inflammatory mediators, such as bacterial lipopolysaccharide (LPS) and cytokines. The B1 and B2 receptors represent potential therapeutic targets for treatment of inflammatory disorders and cardiovascular diseases.		

— VALIDATION IMAGES —

Sample: Lane 1: Human U87MG cell lysates Lane 2: Human LOVO cell lysates Lane 3: Human HUVEC cell lysates Lane 4: Human K562 cell lysates Lane 5: Human U251 cell lysates Lane 6: Human A549 cell lysates Lane 7: Human HeLa cell lysates Primary: Anti-BDKRB1 (bs-23908R) at 1/1000 dilution Secondary: IRDye800CW Goat Anti-Rabbit IgG at 1/20000 dilution Predicted band size: 40 kDa Observed band size: 60 kDa