

bsm-51077M**[Primary Antibody]****RAB8A Mouse mAb****BioSS**
ANTIBODIES

www.bioss.com.cn

sales@bioss.com.cn

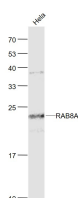
techsupport@bioss.com.cn

400-901-9800

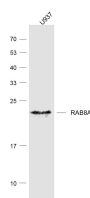
— DATASHEET —**Host:** Mouse**Clonality:** Monoclonal**Target:** RAB8A**Purification:** affinity purified by Protein G**Concentration:** 1mg/ml**Storage:** 0.01M TBS (pH7.4) with 1% BSA, 0.02% Proclin300 and 50% Glycerol.

Shipped at 4°C. Store at -20°C for one year. Avoid repeated freeze/thaw cycles.

Background: The protein encoded by this gene is a member of the RAS superfamily which are small GTP/GDP-binding proteins with an average size of 200 amino acids. The RAS-related proteins of the RAB/YPT family may play a role in the transport of proteins from the endoplasmic reticulum to the Golgi and the plasma membrane. This protein shares 97%, 96%, and 51% similarity with the dog RAB8, mouse MEL, and mouse YPT1 proteins, respectively and contains the 4 GTP/GDP-binding sites that are present in all the RAS proteins. The putative effector-binding site of this protein is similar to that of the RAB/YPT proteins. However, this protein contains a C-terminal CAAX motif that is characteristic of many RAS superfamily members but which is not found in YPT1 and the majority of RAB proteins. Although this gene was isolated as a transforming gene from a melanoma cell line, no linkage between MEL and malignant melanoma has been demonstrable. This oncogene is located 800 kb distal to MY09B on chromosome 19p13.1.

Isotype: IgG1, k**CloneNo.:** 8A4**Applications:** WB (1:500-2000)**ELISA** (1:5000-10000)**Reactivity:** Human**Predicted MW.:** 23 kDa**Subcellular Location:** Cell membrane ,Cytoplasm**— VALIDATION IMAGES —**

Sample: HeLa(Human) Cell Lysate at 30 ug
 Primary: Anti- RAB8A (bsm-51077M) at 1/1000
 dilution Secondary: IRDye800CW Goat Anti-Mouse IgG at 1/20000 dilution Predicted band size: 23 kD Observed band size: 23 kD



Sample: U937(Human) Cell Lysate at 30 ug
 Primary: Anti-RAB8A (bsm-51077M) at 1/1000
 dilution Secondary: IRDye800CW Goat Anti-Mouse IgG at 1/20000 dilution Predicted band size: 23 kD Observed band size: 23 kD