

bs-22116R**[Primary Antibody]****SERPINB1 Rabbit pAb****BioSS**
ANTIBODIES

www.bioss.com.cn

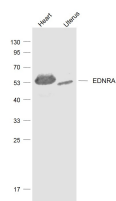
sales@bioss.com.cn

techsupport@bioss.com.cn

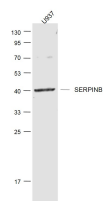
400-901-9800

— DATASHEET —

Host: Rabbit	Isotype: IgG	Applications: WB (1:500-2000)
Clonality: Polyclonal		Reactivity: Human, Mouse (predicted: Rat)
GeneID: 1992	SWISS: P30740	
Target: SERPINB1		
Immunogen: KLH conjugated synthetic peptide derived from human SERPINB1 : 131-230/379.		Predicted MW.: 43 kDa
Concentration: 1mg/ml		Subcellular Location: Cytoplasm
Storage: 0.01M TBS (pH7.4) with 1% BSA, 0.02% Proclin300 and 50% Glycerol. Shipped at 4°C. Store at -20°C for one year. Avoid repeated freeze/thaw cycles.		
Background: The serine proteinase inhibitors (serpins) compose a superfamily of proteins with a diverse set of functions, including the control of blood coagulation, complement activation, programmed cell death and development. Serpins are secreted glycoproteins that contain a stretch of peptide that mimics a true substrate for a corresponding serine protease. The monocyte/neutrophil elastase inhibitor gene, SERPINB1, belongs to the Ov-serpin family (ovalbumin-related serpins). Human SerpinB1, also designated monocyte/neutrophil elastase inhibitor (M/NEI) or leukocyte elastase inhibitor (LEI), is a cytoplasmic protein which acts as a fast-acting stoichiometric proteinase inhibitor that regulates the activity of neutrophil elastase (NE), cathepsin-G and proteinase-3. There are four homologous genes in mouse designated SerpinB1a, SerpinB1b, SerpinB1c and the pseudogene, Serpinb1-ps1. The three protein-coding genes share significant sequence identity, however SerpinB1a (also designated EIA) has been characterized as the functional ortholog of human SerpinB1.		

— VALIDATION IMAGES —

Sample: Heart (Mouse) Lysate at 40 ug Uterus (Mouse) Lysate at 40 ug
 Primary: Anti-EDNRA (bs-22144R) at 1/1000 dilution
 Secondary: IRDye800CW Goat Anti-Rabbit IgG at 1/20000 dilution
 Predicted band size: 47 kD Observed band size: 47 kD



Sample: U937 (Human) Cell Lysate at 30 ug
 Primary: Anti-SERPINB1 (bs-22116R) at 1/1000 dilution
 Secondary: IRDye800CW Goat Anti-Rabbit IgG at 1/20000 dilution
 Predicted band size: 43 kD Observed band size: 43 kD