

bs-22114R**[Primary Antibody]****SEMA4D Rabbit pAb****Bioss**
ANTIBODIES

www.bioss.com.cn

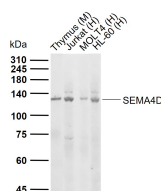
sales@bioss.com.cn

techsupport@bioss.com.cn

400-901-9800

— DATASHEET —

Host: Rabbit	Isotype: IgG	Applications: WB (1:500-2000)
Clonality: Polyclonal		Reactivity: Human, Mouse (predicted: Rat, Pig, Sheep, Cow, Chicken)
GeneID: 10507	SWISS: Q92854	
Target: SEMA4D		Predicted MW.: 96 kDa
Immunogen: KLH conjugated synthetic peptide derived from human SEMA4D: 301-400/862. < Extracellular >		Subcellular Location: Cell membrane
Purification: affinity purified by Protein A		
Concentration: 1mg/ml		
Storage: 0.01M TBS (pH7.4) with 1% BSA, 0.02% Proclin300 and 50% Glycerol. Shipped at 4°C. Store at -20°C for one year. Avoid repeated freeze/thaw cycles.		
Background: May play a functional role in the immune system, as well as in the nervous system. Induces B-cells to aggregate and improves their viability in vitro.		

— VALIDATION IMAGES —

Sample: Lane 1: Mouse Thymus tissue lysates
Lane 2: Human Jurkat cell lysates Lane 3:
Human MOLT4 cell lysates Lane 4: Human HL-60
cell lysates Primary: Anti- SEMA4D (bs-22114R) at
1/1000 dilution Secondary: IRDye800CW Goat
Anti-Rabbit IgG at 1/20000 dilution Predicted
band size: 96 kDa Observed band size: 120 kDa

— SELECTED CITATIONS —

- **[IF=2.6]** Najla Al Turkestani. et al. Semaphorin 4D Induces Vasculogenic Differentiation of Dental Pulp Stem Cells. Dentistry Journal. 2023 Jul;11(7):160 WB,IF ;Human. 10.3390/dj11070160