

[Primary Antibody]

Podoplanin Rabbit pAb



BioSS
ANTIBODIES

www.bioss.com.cn

sales@bioass.com.cn

techsupport@bioss.com.cn

400-901-9800

— DATASHEET

Host: Rabbit

Isotype: IgG

Applications: WB (1:500-2000)

Clonality: Polyclonal

GeneID: 10630

SWISS: O86YL7

Target: Podoplanin

Immunogen: KLH conjugated synthetic peptide derived from human Podoplanin: 31-130/166.

Purification: affinity purified by Protein A

Concentration: 1mg/ml

Storage: 0.01M TBS (pH7.4) with 1% BSA, 0.02% Proclin300 and 50% Glycerol.

Shipped at 4°C. Store at -20°C for one year. Avoid repeated freeze/thaw cycles.

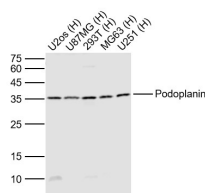
Background: This gene encodes a type-I integral membrane glycoprotein with diverse distribution in human tissues. The physiological function of this protein may be related to its mucin-type character. The homologous protein in other species has been described as a differentiation antigen and influenza-virus receptor. The specific function of this protein has not been determined but it has been proposed as a marker of lung injury. Alternatively spliced transcript variants encoding different isoforms have been identified.
[provided by RefSeq, Jul 2008]

Reactivity: Human (predicted: Mouse, Rat)

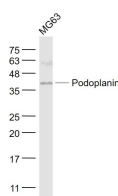
Predicted MW.: 15 kDa

Subcellular Location: Cell membrane ,Cytoplasm

— VALIDATION IMAGES



Sample: Lane 1: U2os (Human) Cell Lysate at 30 ug
Lane 2: U87MG (Human) Cell Lysate at 30 ug
Lane 3: 293T (Human) Cell Lysate at 30 ug
Lane 4: MG63 (Human) Cell Lysate at 30 ug
Lane 5: U251 (Human) Cell Lysate at 30 ug
Primary: Anti-Podoplanin (bs-10673R) at 1/1000 dilution
Secondary: IRDye800CW Goat Anti-Rabbit IgG at 1/20000 dilution
Predicted band size: 35 kD
Observed band size: 35 kD



Sample: MG63(Human) Cell Lysate at 30 ug
Primary: Anti-Podoplanin (bs-10673R) at 1/300
dilution Secondary: IRDye800CW Goat Anti-
Rabbit IgG at 1/20000 dilution Predicted band
size: 15 kD Observed band size: 37kD