

bs-20723R**[Primary Antibody]****SLC22A11 Rabbit pAb****Bioss**
ANTIBODIES

www.bioss.com.cn

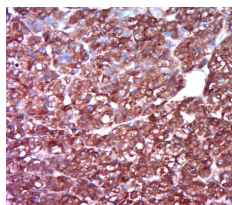
sales@bioss.com.cn

techsupport@bioss.com.cn

400-901-9800

— DATASHEET —

Host: Rabbit	Isotype: IgG	Applications: IHC-P (1:100-500)
Clonality: Polyclonal		IHC-F (1:100-500)
GeneID: 55867	SWISS: Q9NSA0	IF (1:100-500)
Target: SLC22A11		Reactivity: Human
Immunogen: KLH conjugated synthetic peptide derived from human SLC22A11: 21-120/550. < Extracellular >		
Purification: affinity purified by Protein A		Predicted MW.: 60 kDa
Concentration: 1mg/ml		Subcellular Location: Cell membrane
Storage: Preservative: 0.02% Proclin300, Constituents: 1% BSA, 0.01M PBS, pH7.4. Shipped at 4°C. Store at -20°C for one year. Avoid repeated freeze/thaw cycles.		
Background: The protein encoded by this gene is involved in the sodium-independent transport and excretion of organic anions, some of which are potentially toxic. The encoded protein is an integral membrane protein and is found mainly in the kidney and in the placenta, where it may act to prevent potentially harmful organic anions from reaching the fetus. Alternative splicing results in multiple transcript variants. [provided by RefSeq, Apr 2015]		

— VALIDATION IMAGES —

Paraformaldehyde-fixed, paraffin embedded (human liver carcinoma); Antigen retrieval by boiling in sodium citrate buffer (pH6.0) for 15min; Block endogenous peroxidase by 3% hydrogen peroxide for 20 minutes; Blocking buffer (normal goat serum) at 37°C for 30min; Antibody incubation with (SLC22A11) Polyclonal Antibody, Unconjugated (bs-20723R) at 1:400 overnight at 4°C, followed by a conjugated secondary (sp-0023) for 20 minutes and DAB staining.