

**bs-20181R**

**[ Primary Antibody ]**

## **PALM3 Rabbit pAb**

**BioSS**  
ANTIBODIES

www.bioss.com.cn

sales@bioss.com.cn

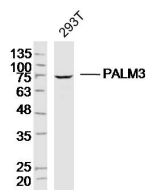
techsupport@bioss.com.cn

400-901-9800

### **— DATASHEET —**

<b>Host:</b> Rabbit	<b>Isotype:</b> IgG	<b>Applications:</b> WB (1:500-2000)
<b>Clonality:</b> Polyclonal		
<b>GeneID:</b> 342979	<b>SWISS:</b> A6NDB9	
<b>Target:</b> PALM3		
<b>Immunogen:</b> KLH conjugated synthetic peptide derived from human PALM3: 1-100/673.		
<b>Purification:</b> affinity purified by Protein A		<b>Reactivity:</b> Human (predicted: Cow)
<b>Concentration:</b> 1mg/ml		
<b>Storage:</b> Preservative: 0.02% Proclin300, Constituents: 1% BSA, 0.01M PBS, pH7.4. Shipped at 4°C. Store at -20°C for one year. Avoid repeated freeze/thaw cycles.		<b>Predicted MW.:</b> 72 kDa
		<b>Subcellular Location:</b> Cell membrane ,Cytoplasm

### **— VALIDATION IMAGES —**



Sample: 293T (Human) Cell Lysate at 40 ug  
Primary: Anti-PALM3(bs-20181R) at 1/300 dilution  
Secondary: IRDye800CW Goat Anti-Rabbit IgG at 1/20000 dilution  
Predicted band size: 72 kD  
Observed band size: 72 kD