

## CHRM4 Rabbit pAb

Catalog Number: bs-20372R

Target Protein: CHRM4

Concentration: 1mg/ml

Form: Liquid

Host: Rabbit

Clonality: Polyclonal

Isotype: IgG

Applications: WB (1:500-2000)

Reactivity: Human (predicted:Mouse, Rat)

Predicted MW: 53 kDa

Entrez Gene: 1132

Swiss Prot: P08173

Source: KLH conjugated synthetic peptide derived from human CHRM4: 131-230/479.

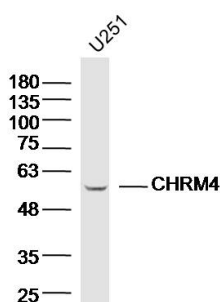
Purification: affinity purified by Protein A

Storage: Preservative: 0.02% Proclin300, Constituents: 1% BSA, 0.01M PBS, pH7.4.

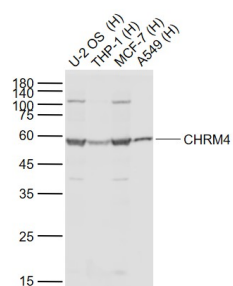
Shipped at 4°C. Store at -20°C for one year. Avoid repeated freeze/thaw cycles.

**Background:** The muscarinic cholinergic receptors belong to a larger family of G protein-coupled receptors. The functional diversity of these receptors is defined by the binding of acetylcholine and includes cellular responses such as adenylate cyclase inhibition, phosphoinositide degeneration, and potassium channel mediation. Muscarinic receptors influence many effects of acetylcholine in the central and peripheral nervous system. The clinical implications of this receptor are unknown; however, mouse studies link its function to adenyl cyclase inhibition. [provided by RefSeq, Jul 2008]

### VALIDATION IMAGES



Sample:U251 Cell (Human) Lysate at 40 ug Primary: Anti-CHRM4(bs-20372R)at 1/300 dilution Secondary: IRDye800CW Goat Anti-Rabbit IgG at 1/20000 dilution Predicted band size: 53kD Observed band size: 53kD



Sample: Lane 1: Human U-2 OS cell lysates Lane 2: Human THP-1 cell lysates Lane 3: Human MCF-7 cell lysates Lane 4: Human A549 cell lysates Primary: Anti-CHRM4 (bs-20372R) at 1/1000 dilution Secondary: IRDye800CW Goat Anti-Rabbit IgG at 1/20000 dilution Predicted band size: 53 kD Observed band size: 55 kD