
CD31 Rabbit pAb

Catalog Number: bs-20319R

Target Protein: CD31

Concentration: 1mg/ml

Form: Liquid

Host: Rabbit

Clonality: Polyclonal

Isotype: IgG

Applications: **WB** (1:500-2000)

Reactivity: Mouse, Rat (predicted: Human)

Predicted MW: 78 kDa

Subcellular Membrane ,Cell junction ,Cell membrane

Locations:

Entrez Gene: 5175

Swiss Prot: P16284

Source: KLH conjugated synthetic peptide derived from human CD31: 501-600/738.

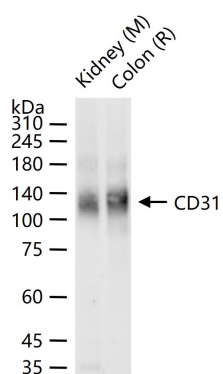
Purification: affinity purified by Protein A

Storage: Preservative: 0.02% Proclin300, Constituents: 1% BSA, 0.01M PBS, pH7.4.

Shipped at 4°C. Store at -20°C for one year. Avoid repeated freeze/thaw cycles.

Background: The protein encoded by this gene is found on the surface of platelets, monocytes, neutrophils, and some types of T-cells, and makes up a large portion of endothelial cell intercellular junctions. The encoded protein is a member of the immunoglobulin superfamily and is likely involved in leukocyte migration, angiogenesis, and integrin activation. [provided by RefSeq, May 2010]

VALIDATION IMAGES



25 ug total protein per lane of various lysates (see on figure) probed with CD31 polyclonal antibody, unconjugated (bs-20319R) at 1:1000 dilution and 4°C overnight incubation. Followed by conjugated secondary antibody incubation at r.t. for 60 min.

PRODUCT SPECIFIC PUBLICATIONS

[IF=4.784] Ding J et al. Anti-angiogenic effect of a chemically sulfated polysaccharide from *Phellinus ribis* by inhibiting VEGF/VEGFR pathway. *Int J Biol Macromol.* 2020 Mar 11;154:72-81. IHC, WB ; mouse . 32171839