

**bs-11963R****[ Primary Antibody ]****SORCS2 Rabbit pAb****BioSS**  
**ANTIBODIES**

www.bioss.com.cn

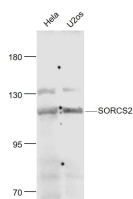
sales@bioss.com.cn

techsupport@bioss.com.cn

400-901-9800

**— DATASHEET —**

<b>Host:</b> Rabbit	<b>Isotype:</b> IgG	<b>Applications:</b> WB (1:500-2000)
<b>Clonality:</b> Polyclonal		<b>Reactivity:</b> Human (predicted: Mouse, Rat)
<b>GeneID:</b> 57537	<b>SWISS:</b> Q96PQ0	
<b>Target:</b> SORCS2		<b>Predicted MW.:</b> 123 kDa
<b>Immunogen:</b> KLH conjugated synthetic peptide derived from human SORCS2: 201-300/1159.		<b>Subcellular Location:</b> Cell membrane
<b>Purification:</b> affinity purified by Protein A		
<b>Concentration:</b> 1mg/ml		
<b>Storage:</b> 0.01M TBS (pH7.4) with 1% BSA, 0.02% Proclin300 and 50% Glycerol. Shipped at 4°C. Store at -20°C for one year. Avoid repeated freeze/thaw cycles.		
<b>Background:</b> There are three SorCS genes that have diverse, partially overlapping functions in the central nervous system. In the developing and mature central nervous system, SorCS1, SorCS2 and SorCS3 genes are expressed in a combinatorial, non-overlapping pattern. SorCS proteins show homology to the mosaic receptor SorLA and the neurotensin receptor sortilin, based on a common VPS10 domain, which is the hallmark of the SorCS receptor family. SorCS2 (sortilin-related VPS10 domain containing receptor 2) is a 1,150 amino acid single-pass type I membrane protein that is highly expressed in brain and kidney. Containing six BNR repeats and a single PKD domain, SorCS2 is encoded by a gene that maps to human chromosome 4, which encodes nearly 6% of the human genome and has the largest gene deserts (regions of the genome with no protein encoding genes) of all of the human chromosomes.		

**— VALIDATION IMAGES —**

Sample: Hela(Human) Cell Lysate at 30 ug  
U2os(Human) Cell Lysate at 30 ug Primary: Anti-SORCS2 (bs-11963R) at 1/1000 dilution  
Secondary: IRDye800CW Goat Anti-Rabbit IgG at 1/20000 dilution Predicted band size: 123 kD  
Observed band size: 123 kD